

(ZETTR4.ZETTR) 24137

# ZETTR FOUR DEPARTURE (RNAV)

AL-5293 (FAA)

OAKLAND/TROY (VLL)

TROY, MICHIGAN

DETROIT DEP CON  
132.35 284.0  
AWOS-3  
119.475  
CTAF  
123.05

RNAV 1 - DME/DME/IRU or GPS.

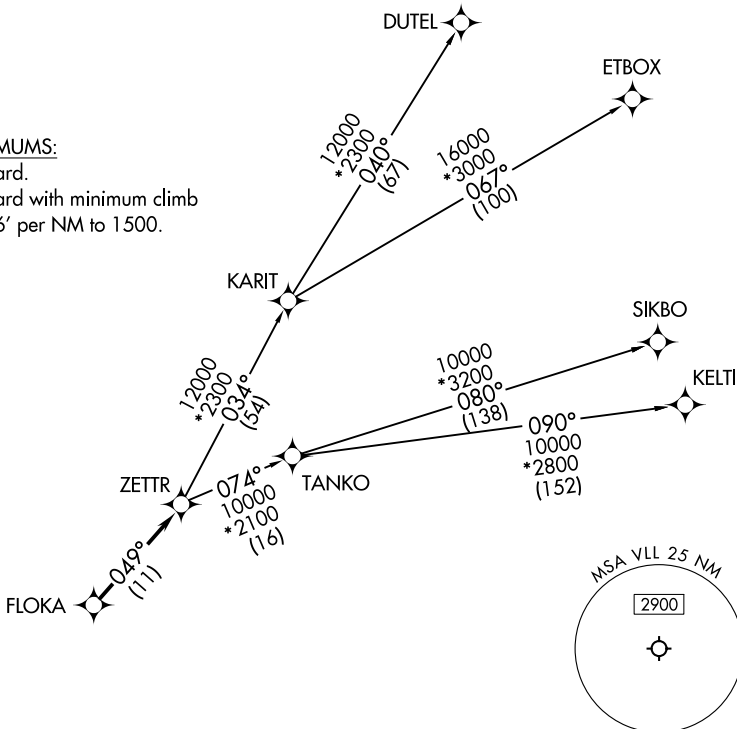
RADAR required.

**TOP ALTITUDE:  
ASSIGNED BY ATC**

### TAKEOFF MINIMUMS:

Rwy 10: Standard.

Rwy 28: Standard with minimum climb  
of 476' per NM to 1500.



EC-1, 13 JUN 2024 to 11 JUL 2024

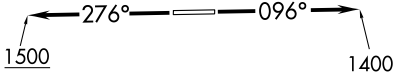
EC-1, 13 JUN 2024 to 11 JUL 2024

### DEPARTURE ROUTE DESCRIPTION

**TAKEOFF RUNWAY 10:** Climb on heading 096° to 1400 then as assigned by ATC, then....  
**TAKEOFF RUNWAY 28:** Climb on heading 276° to 1500 then as assigned by ATC, then....

...for RADAR vectors to FLOKA, then on track 049° to ZETTR, then on (transition). Maintain ATC assigned altitude, expect filed altitude 10 minutes after departure.

- DUTEL TRANSITION (ZETTR4.DUTEL):
- ETBOX TRANSITION (ZETTR4.ETBOX):
- KELTI TRANSITION (ZETTR4.KELTI):
- SIKBO TRANSITION (ZETTR4.SIKBO):
- TANKO TRANSITION (ZETTR4.TANKO):



NOTE: Turbojet departures at/above 10000, maintain 280K until advised by ATC.  
 NOTE: TANKO Transition: For use by CYYZ area arrivals only, or as assigned by ATC.

NOTE: Chart not to scale.

## ZETTR FOUR DEPARTURE (RNAV)

(ZETTR4.ZETTR) 16MAY24

TROY, MICHIGAN  
OAKLAND/TROY (VLL)