

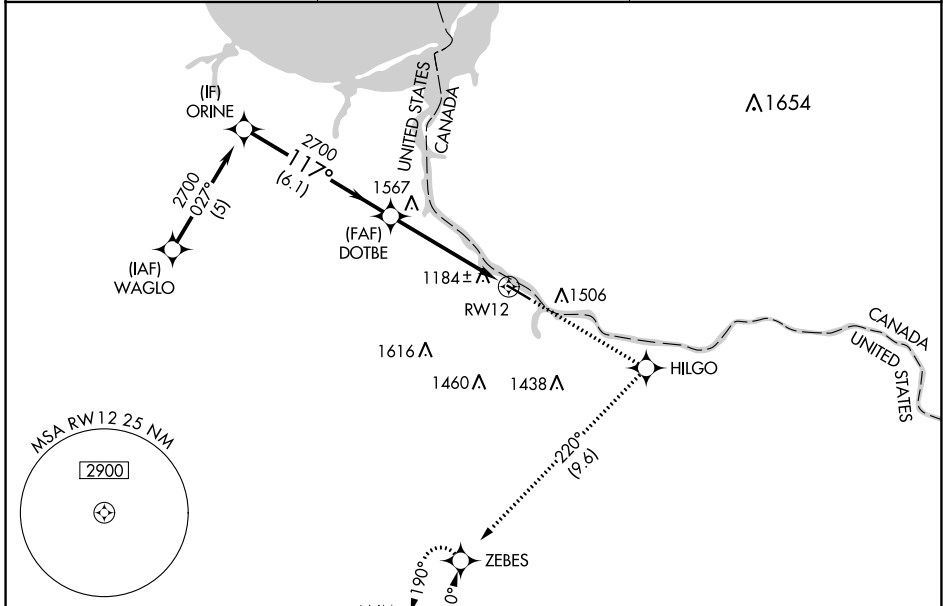
APP CRS <b>117°</b>	Rwy Idg TDZE Apt Elev	<b>5498</b> <b>1085</b> <b>1085</b>
------------------------	-----------------------------	---

# RNAV (GPS) RWY 12

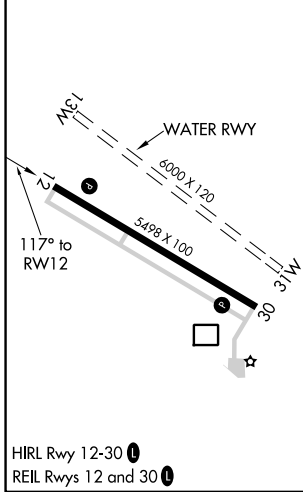
BAUDETTE INTL (BDE)

RNP APCH.	MISSED APPROACH: Climb to 3000 direct HILGO and right turn on track 220° to ZEBES and hold.
<p>▼ Rwy 12 helicopter visibility reduction below 3/4 SM NA.</p> <p>▲ For uncompensated Baro-VNAV systems, LNAV/VNAV NA below -17°C or above 54°C.</p>	

ASOS <b>126.775</b>	MINNEAPOLIS CENTER <b>134.75 251.1</b>	UNICOM <b>122.8 (CTAF)</b>
------------------------	---	-------------------------------



ELEV 1085	TDZE 1085
-----------	-----------



	ORINE	DOTBE		3000	HILGO	ZEBES
		2700	2700	↑	✧	↻ tr 220°
	2700	117°	2700			
					*1.3 NM to RWY12	*LNAV only
GP 3.00° TCH 47	6.1 NM		3.6 NM	1.3 NM		
CATEGORY	A	B	C	D		
LNAV/VNAV DA	1481-1½		396 (400-1½)			
LNAV MDA	1560-1	475 (500-1)	1560-1 3/8 475 (500-1 3/8)	1560-1 1/2 475 (500-1 1/2)		

NC-1, 13 JUN 2024 to 11 JUL 2024

NC-1, 13 JUN 2024 to 11 JUL 2024