

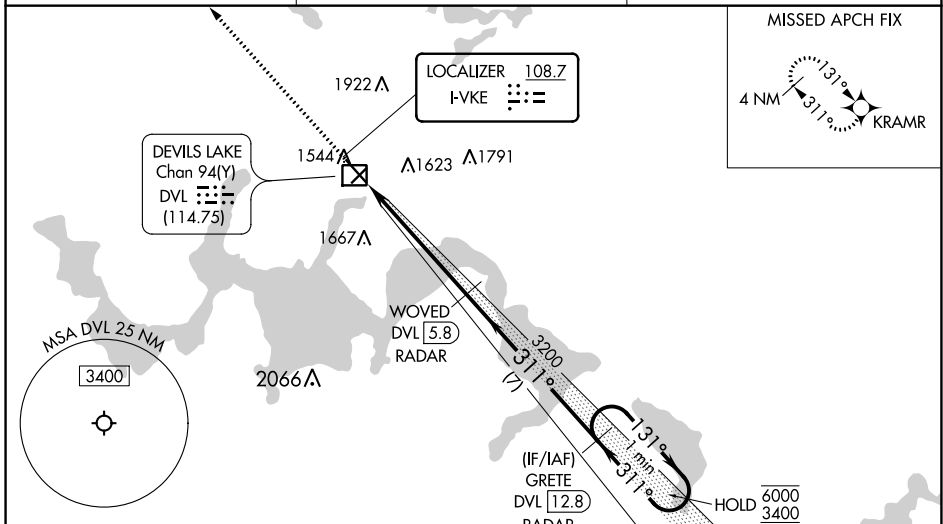
LOC I-VKE 108.7	APP CRS 311°	Rwy Idg TDZE Apt Elev	6400 1450 1469
---------------------------	------------------------	-----------------------------	-------------------------------------------

ILS or LOC RWY 31

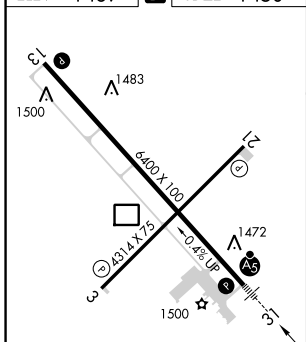
DEVILS LAKE RGNL (DVL)

RNP APCH - GPS.		MALSR 	MISSED APPROACH: Climb to 3400 direct KRAMR and hold.
DME or RADAR required.			
<p>NA VDP NA when using Cando altimeter setting. When local altimeter setting not received, use Cando altimeter setting and increase S-ILS 31 DA to 1711 feet; increase all MDAs 80 feet and S-LOC 31 visibility Cat C/D 1/2 SM, and Circling visibility Cat C/D 1/4 SM. DME from DVL DME. DME use requires simultaneous reception of I-VKE and DVL DME. For inop ALS when using Cando altimeter setting, increase S-ILS 31 all Cats visibility to 3/8 SM. For inop ALS, increase S-LOC 31 Cat C/D visibility to 1 3/8 SM.</p>			

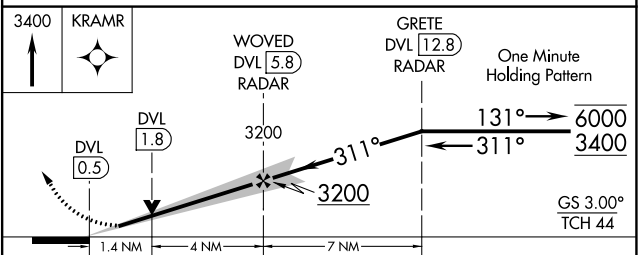
AWOS-3PT 125.875	MINNEAPOLIS CENTER 124.2 270.3	UNICOM 122.8 (CTAF)
----------------------------	------------------------------------------	-------------------------------



ELEV 1469	D	TDZE 1450
-----------	----------	-----------



HIRL Rwy 13-31	REIL Rwys 3, 13 and 21	MIRL Rwy 3-21			
FAF to MAP 5.4 NM					
Knots	60	90	120	150	180
Min:Sec	5:24	3:36	2:42	2:10	1:48



CATEGORY	A	B	C	D
S-ILS 31	1650-1/2		200 (200-1/2)	
S-LOC 31	1920-1/2 470 (500-1/2)		1920-1 470 (500-1)	
C CIRCLING	2000-1 531 (600-1)		2240-2 1/4 771 (800-2 1/4)	2240-2 1/2 771 (800-2 1/2)

NC-1, 13 JUN 2024 to 11 JUL 2024

NC-1, 13 JUN 2024 to 11 JUL 2024