

WAAS CH <b>78314</b> <b>W13A</b>	APP CRS <b>131°</b>	Rwy ldg <b>6400</b> TDZE <b>1470</b> Apt Elev <b>1470</b>
--	------------------------	---

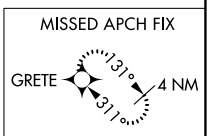
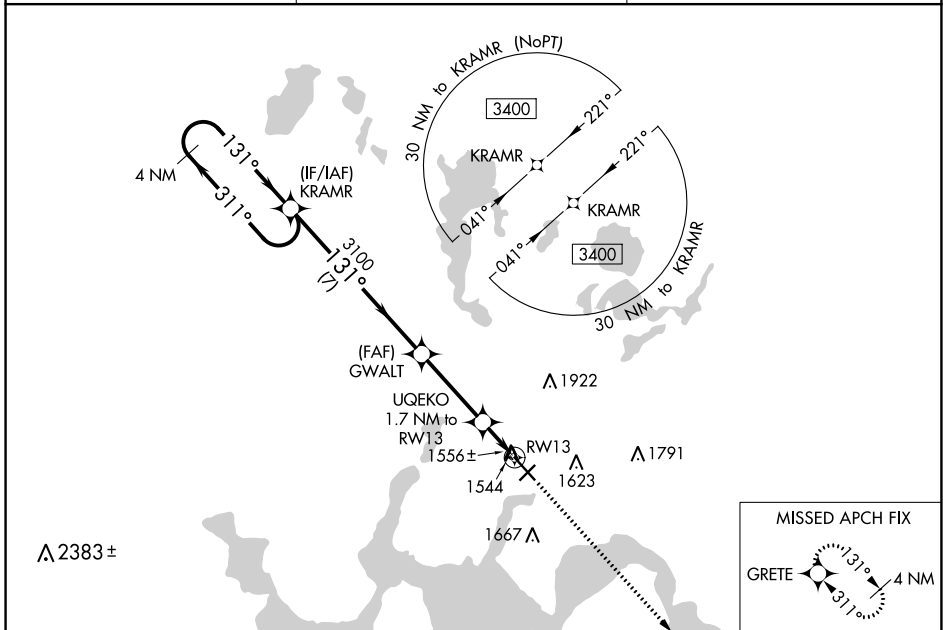
# RNAV (GPS) RWY 13

DEVILS LAKE RGNL (DVL)

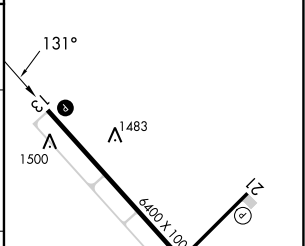
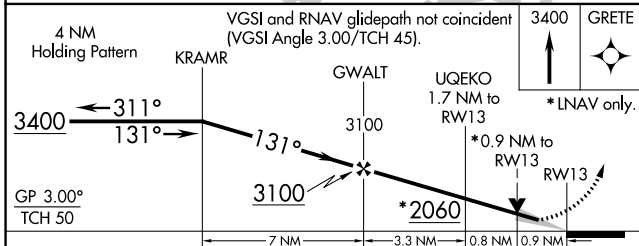
**⚠** For uncompensated Baro-VNAV systems, LNAV/VNAV NA below -17°C (2°F) or above 54°C (130°F). DME/DME RNP-0.3 NA. Baro-VNAV and VDP NA when using Cando altimeter setting. When local altimeter setting not received, use Cando altimeter setting and increase all DA 63 feet and all MDA 80 feet, increase LPV and LNAV/VNAV all. Cats visibility ¼ mile, LNAV and Circling Cats C and D visibility ½ mile.

MISSED APPROACH: Climb to 3400 direct GRETE and hold.

AWOS-3PT <b>125.875</b>	MINNEAPOLIS CENTER <b>124.2 270.3</b>	UNICOM <b>122.8 (CTAF)</b> <b>Ⓛ</b>
----------------------------	--	--



ELEV 1470	<b>D</b>	TDZE 1470
-----------	----------	-----------



CATEGORY	A	B	C	D
LPV DA		1720-¾	250 (300-¾)	
LNAV/VNAV DA		1791-1	321 (400-1)	
LNAV MDA		1820-1	350 (400-1)	
<b>C</b> CIRCLING	2000-1	530 (600-1)	2240-2¼ 770 (800-2¼)	2240-2½ 770 (800-2½)

HIRL Rwy 13-31 **Ⓛ**  
REIL Rws 3, 13, and 21 **Ⓛ**  
MIRL Rwy 3-21 **Ⓛ**

NC-1, 13 JUN 2024 to 11 JUL 2024

NC-1, 13 JUN 2024 to 11 JUL 2024