

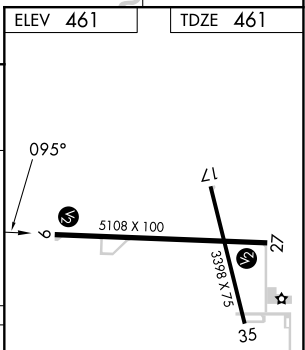
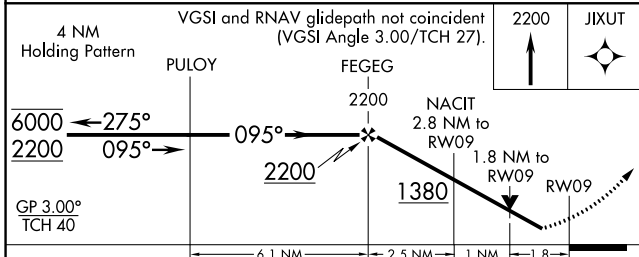
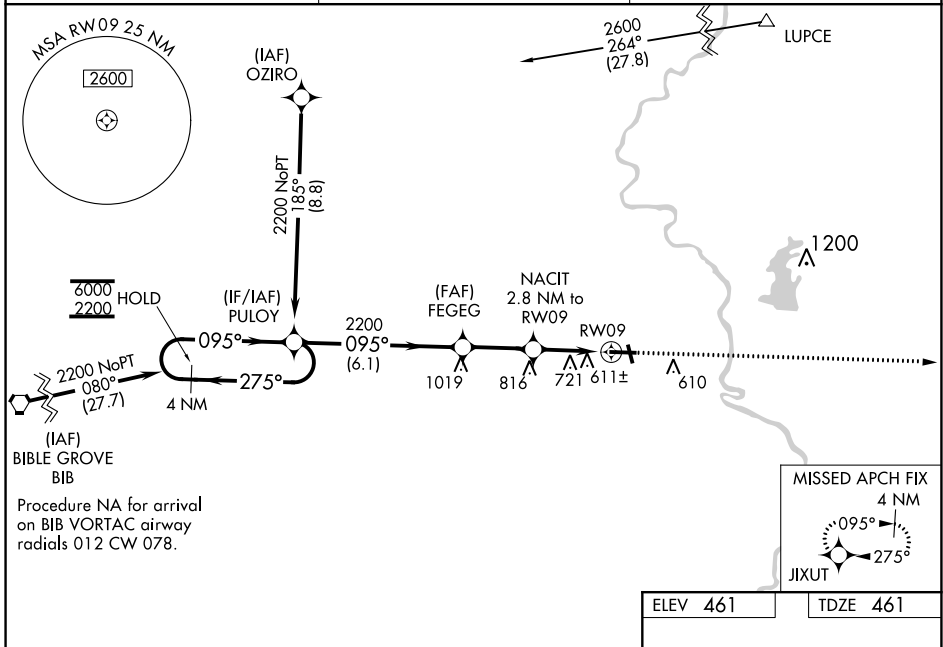
WAAS CH 49109 W09A	APP CRS 095°	Rwy Idg TDZE Apt Elev	5108 461 461
----------------------------------------	------------------------	-----------------------------	-----------------------------------------

RNAV (GPS) RWY 9

CRAWFORD COUNTY (RSV)

RNP APCH - GPS.		MISSED APPROACH: Climb to 2200 direct JIXUT and hold.
⚠ ⚠	Rwy 9 helicopter visibility reduction below ¾ SM NA. For uncompensated Baro-VNAV systems, LNAV/VNAV NA below -15° C or above 54° C.	

AWOS-3 120.50	HULMAN APP CON 119.25 339.8	UNICOM 123.0 (CTAF) 📻
-------------------------	---------------------------------------	----------------------------------------



CATEGORY	A	B	C	D
LPV DA	805-1½ 344 (400-1½)			
LNAV/VNAV DA	1103-2½ 642 (700-2½)			
LNAV MDA	1040-1	579 (600-1)	1040-1½	579 (600-1½)
CIRCLING	1040-1 579 (600-1)	1080-1 619 (700-1)	1120-1¾ 659 (700-1¾)	1180-2¼ 719 (800-2¼)

ELEV 461	TDZE 461
REIL Rwy 17, 9 and 27 📻	
MRL Rwy 9-27 and 17-35 📻	

EC-3, 13 JUN 2024 to 11 JUL 2024

EC-3, 13 JUN 2024 to 11 JUL 2024