


APP CRS	Rwy Idg	4897
245°	TDZE	326
	Apt Elev	331

RNAV (RNP) Z RWY 24

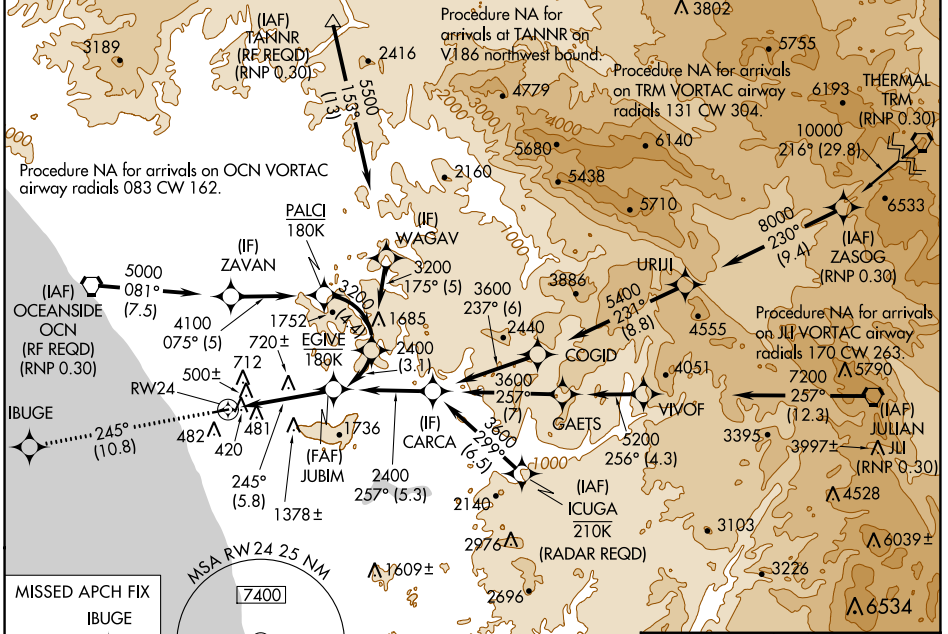
MC CLELLAN-PALOMAR (CRQ)

⚠ For uncompensated Baro-VNAV systems, procedure NA below 1°C (34°F) or above 54°C (130°F). For inoperative MALS/R, increase RNP 0.10 visibility to RVR 6000 all Cats, RNP 0.30 visibility to 1% all Cats. GPS required.

MALS/R 

MISSED APPROACH: Climb to 2000 on track 245° to IBUGE and hold.

ATIS 120.15	SOCAL APP CON 127.3 323.0	PALOMAR TOWER* 118.6 (CTAF) 0 276.4	GND CON 121.8	CLNC DEL 134.85
-----------------------	-------------------------------------	--	-------------------------	---------------------------



MISSSED APCH FIX
IBUGE



4 NM

2000
↑
tr 245°

IBUGE

VGSI and RNAV glidepath not coincident (VGSI Angle 3.20/TCH 54).
See Planview for multiple IF locations.

JUBIM
2400

RW24

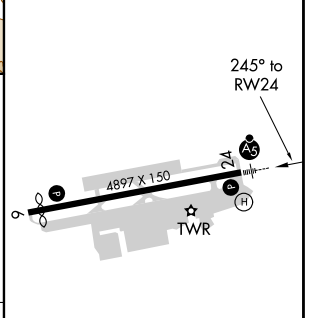
245°

2400

GP 3.30°
TCH 55


5.8 NM


ELEV	331	D	TDZE	326
------	-----	----------	------	-----



CATEGORY	A	B	C	D
RNP 0.10 DA	810/50	484 (500-1)		NA
RNP 0.30 DA	931-1 $\frac{3}{8}$	605 (600-1 $\frac{3}{8}$)		NA

AUTHORIZATION REQUIRED

REIL Rwy 24 

HIRL Rwy 6-24 

SW-3, 13 JUN 2024 to 11 JUL 2024

SW-3, 13 JUN 2024 to 11 JUL 2024