

APP CRS	Rwy Idg	4600
065°	TDZE	331
	Apt Elev	331

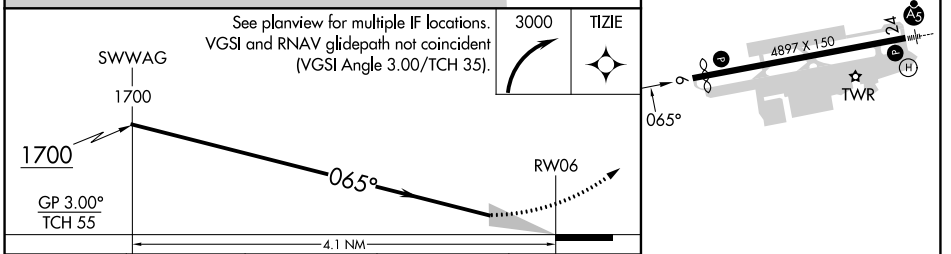
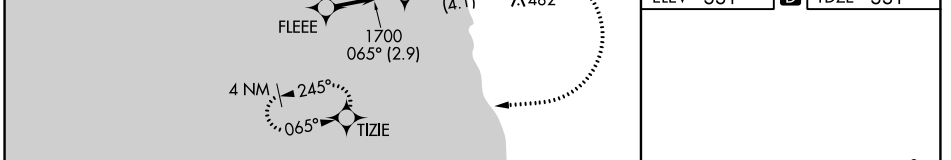
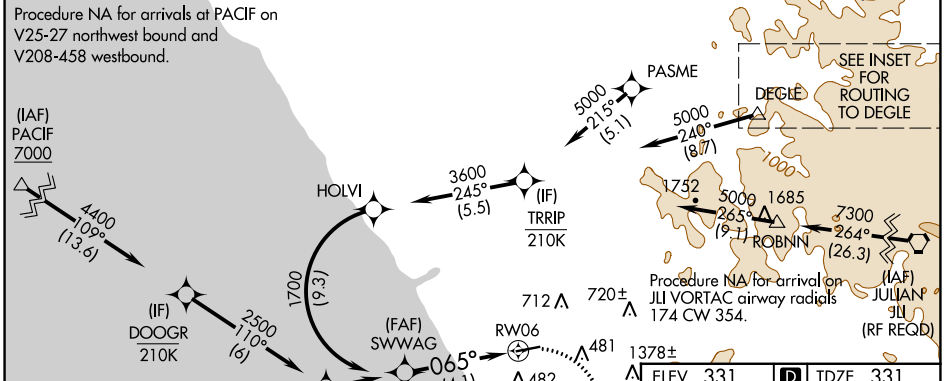
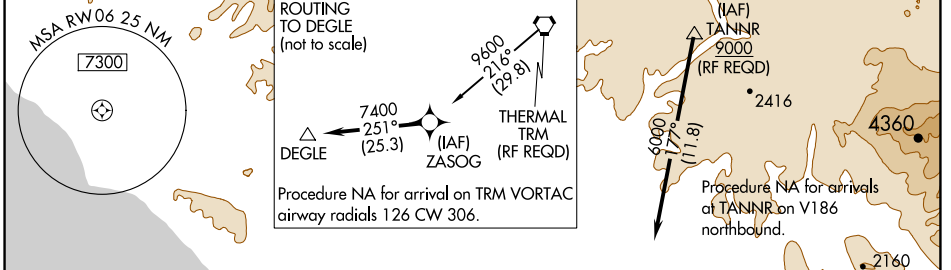
RNAV (RNP) Z RWY 6

MC CLELLAN-PALOMAR (CRQ)

▼ For uncompensated Baro-VNAV systems, procedure NA below 4°C (40°F) or above 54°C (130°F). GPS required.

MISSED APPROACH: Climbing right turn to 3000 direct TIZIE and hold, continue climb-in-hold to 3000.

ATIS 120.15	SOCAL APP CON 127.3 323.0	PALOMAR TOWER ★ 118.6 (CTAF) 0 276.4	GND CON 121.8	CLNC DEL 134.85
-----------------------	-------------------------------------	--	-------------------------	---------------------------



CATEGORY	A	B	C	D
RNP 0.30 DA		810-15%	479 (500-1%)	

AUTHORIZATION REQUIRED

REIL Rwy 24 0

HIRL Rwy 6-24 0

SW-3, 13 JUN 2024 to 11 JUL 2024

SW-3, 13 JUN 2024 to 11 JUL 2024