

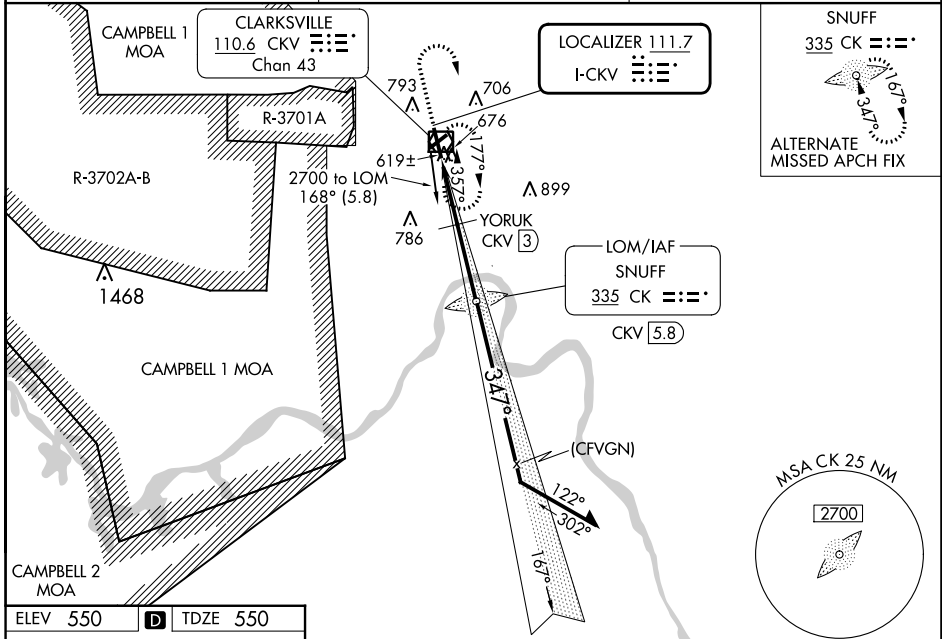
LOC I-CKV 111.7	APP CRS 347°	Rwy Idg TDZE Apt Elev	5999 550 550
---------------------------	------------------------	-----------------------------	-----------------------------------------

LOC RWY 35

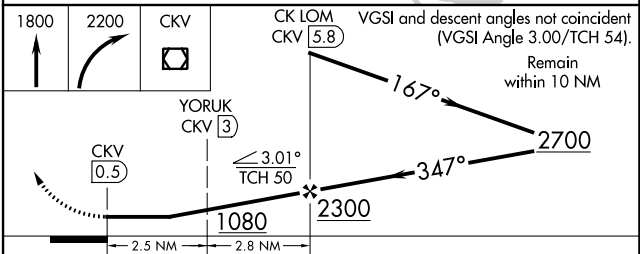
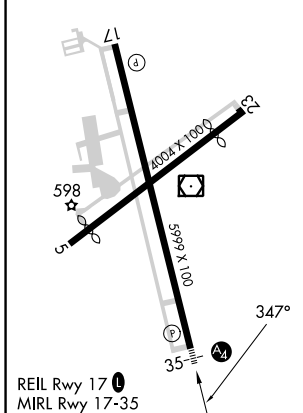
OUTLAW FLD (CKV)

ADF required. RADAR required.	MALS	MISSED APPROACH: Climb to 1800 then climbing right turn to 2200 direct CKV VOR/DME and hold.
<p>▼ Circling NA W of Rwy 17-35. Circling Rwy 5, 17, 23 NA at night. Rwy 35 helicopter visibility reduction below 3/4 SM NA. When local altimeter setting not received, use Campbell AAF (Fort Campbell) altimeter setting. * DME from CKV VOR/DME.</p>		

ASOS 134.575	CAMPBELL APP CON 134.35 307.025	UNICOM 122.8 (CTAF)
------------------------	-------------------------------------------	-------------------------------



ELEV 550		TDZE 550
----------	--	----------



CATEGORY	A	B	C	D
S-LOC 35	1080-3/4	530 (600-3/4)	1080-1 1/4	530 (600-1 1/4)
CIRCLING	1080-1	530 (600-1)	1080-1 1/2	1200-2
			530 (600-1 1/2)	650 (700-2)
YORUK FIX MINIMUMS * (DME REQUIRED)				
S-LOC 35		880-3/4	330 (400-3/4)	
CIRCLING	1000-1	1020-1	1020-1 1/2	1200-2
	450 (500-1)	470 (500-1)	470 (500-1 1/2)	650 (700-2)

FAF to MAP 5.3 NM					
Knots	60	90	120	150	180
Min:Sec	5:18	3:32	2:39	2:07	1:46

SE-1, 13 JUN 2024 to 11 JUL 2024

SE-1, 13 JUN 2024 to 11 JUL 2024