

APP CRS	Rwy Idg	3799
145°	TDZE	1705
	Apt Elev	1706

RNAV (GPS) RWY 14

KINGS LAND O'LAKES (LNL)

RNP APCH - GPS.

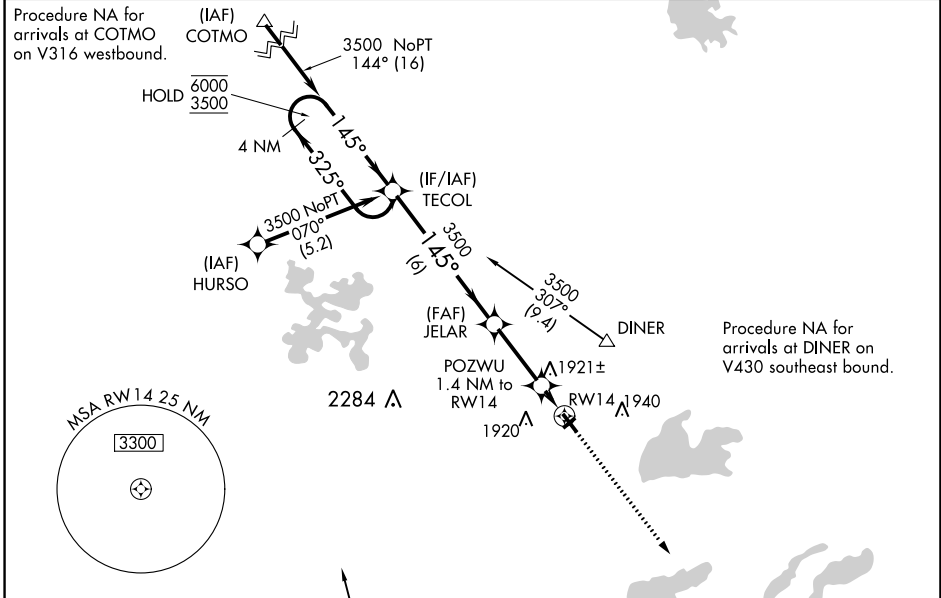
▽ Circling NA to Rwy 5 and 23.
▲ Rwy 14 helicopter visibility reduction below 1 SM NA.

MISSED APPROACH: Climb to 3500 direct TOLOY and hold.

AWOS-3
119.525

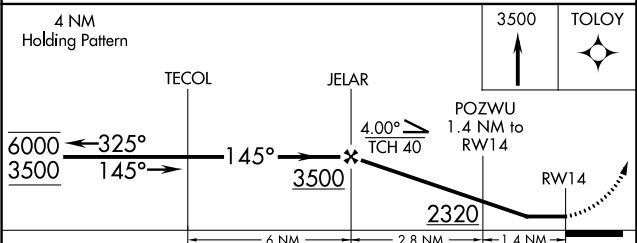
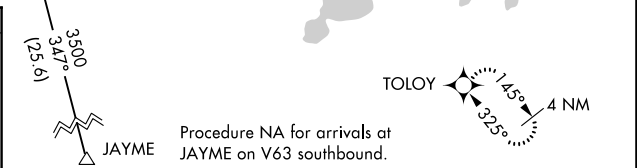
MINNEAPOLIS CENTER
133.65 281.5

UNICOM
122.8 (CTAF) 0



ELEV 1706 | TDZE 1705

MIRL Rwy 14-32 **0**
 REIL Rwy 14 and 32 **0**



CATEGORY	A	B	C	D
LNNAV MDA	2180-1	475 (500-1)	NA	
C CIRCLING	2200-1 494 (500-1)	2240-1 534 (600-1)	NA	

EC-3, 13 JUN 2024 to 11 JUL 2024

EC-3, 13 JUN 2024 to 11 JUL 2024