

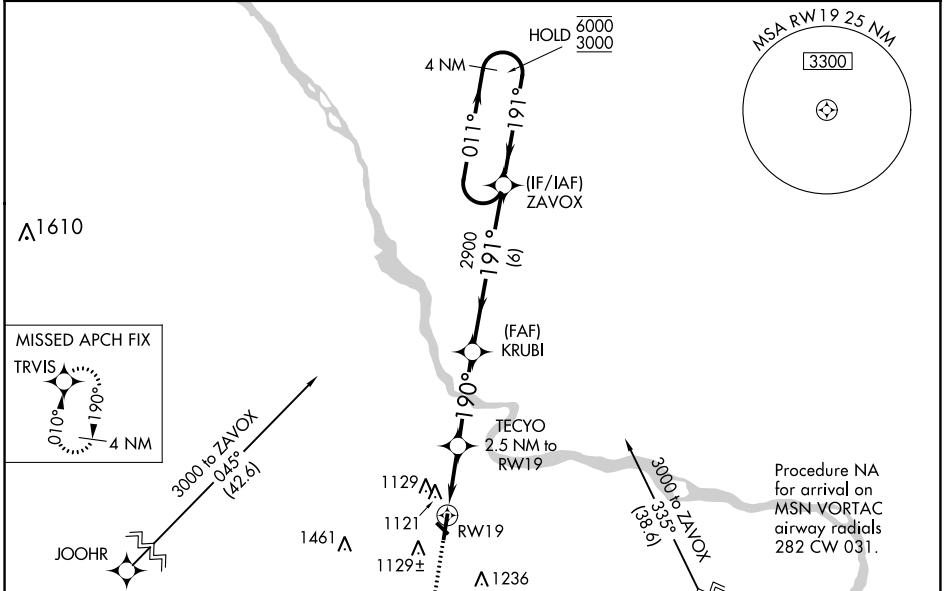
WAAS CH 78232 W19A	APP CRS 190°	Rwy Idg TDZE Apl Elev	5010 979 979
--	------------------------	-----------------------------	---

RNAV (GPS) RWY 19

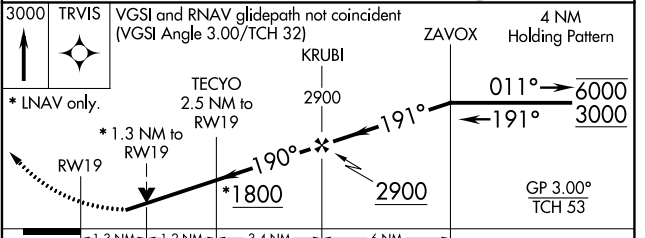
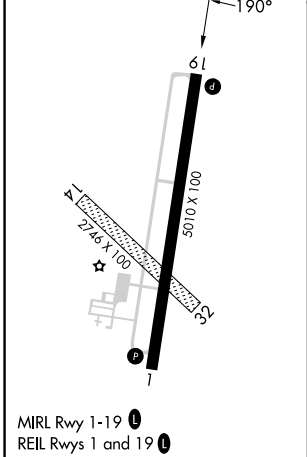
BARABOO/WISCONSIN DELLS RGNL (DLL)

RNP APCH.	<p>⚠ Circling NA to Rwy 14 and 32. Rwy 19 helicopter visibility reduction below ¾ SM NA. For uncompensated Baro-VNAV systems, LNAV/VNAV NA below -16°C or above 54°C.</p>	MISSED APPROACH: Climb to 3000 direct TRVIS and hold.
-----------	--	--

AWOS-3 118.325	MADISON APP CON ★ 135.45 343.7	UNICOM 123.05 (CTAF) 0
--------------------------	--	----------------------------------



ELEV 979	TDZE 979
----------	----------



CATEGORY	A	B	C	D
LPV DA	1341-1		362 (400-1)	NA
LNAV/VNAV DA	1302-1		323 (400-1)	NA
LNAV MDA	1420-1	441 (500-1)	1420-1⅜ 441 (500-1⅜)	NA
C CIRCLING	1520-1	541 (600-1)	1580-1¾ 601 (700-1¾)	NA

EC-3, 13 JUN 2024 to 11 JUL 2024

EC-3, 13 JUN 2024 to 11 JUL 2024