

APP CRS	Rwy Idg	6492
292°	TDZE	23
	Apt Elev	23

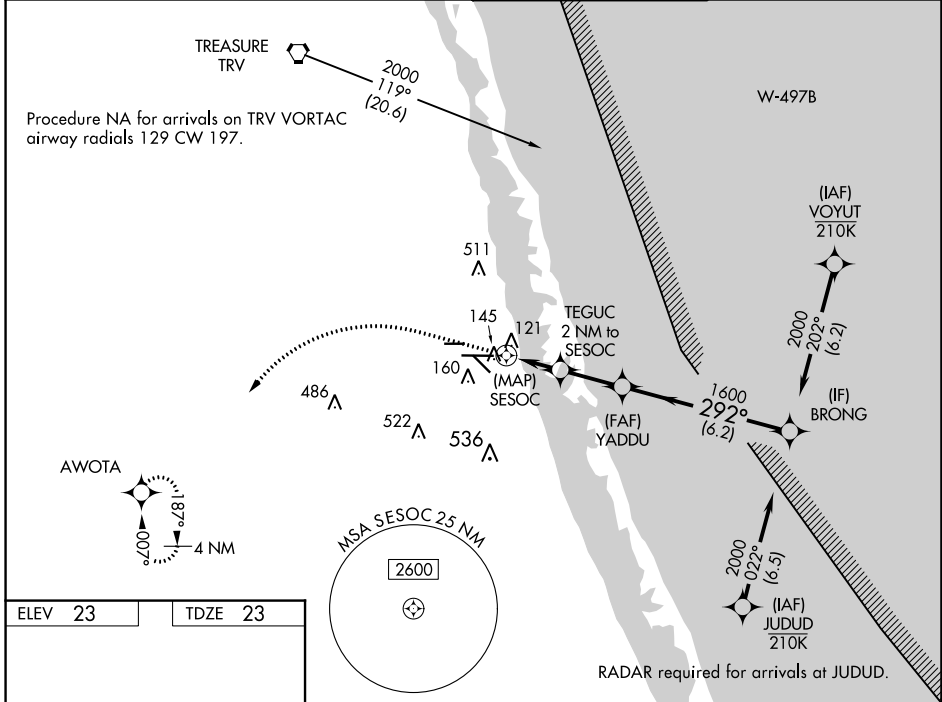
RNAV (GPS) RWY 28L

TREASURE COAST INTL (FPR)

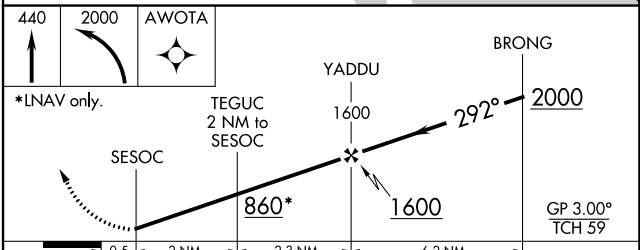
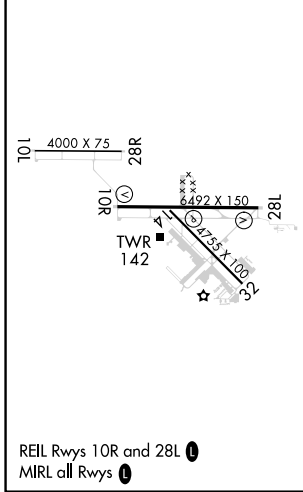
▼ Helicopter visibility reduction below $\frac{3}{4}$ SM NA. For uncompensated Baro-VNAV systems, LNAV/VNAV NA below -15°C (5°F) or above 43°C (109°F). DME/DME RNP-0.3 NA. **▲** When local altimeter setting not received, use Vero Beach altimeter setting and increase LNAV/VNAV DA to 435 feet and MDA 40 feet; increase LNAV/VNAV visibility all Cats and LNAV visibility Cats C/D $\frac{1}{8}$ SM. Increase Circling visibility Cat C/D $\frac{1}{4}$ SM. Baro-VNAV NA when using local altimeter setting.

MISSED APPROACH: Climb to 440 then climbing left turn to 2000 direct AWOTA and hold.

ATIS 134,825	PALM BEACH APP CON 132.8	FORT PIERCE TOWER ★ 128.2 (CTAF) 0	GND CON (GCO) 119,55
------------------------	------------------------------------	--	--------------------------------



ELEV 23	TDZE 23
---------	---------



	0.5	2 NM	2.3 NM	6.2 NM	
CATEGORY	A	B	C	D	
LNAV/VNAV DA		412-1 $\frac{1}{4}$	389 (400-1 $\frac{1}{4}$)		
LNAV MDA		400-1	377 (400-1)		
C CIRCLING	460-1 437 (500-1)	480-1 457 (500-1)	880-2 $\frac{1}{2}$ 857 (900-2 $\frac{1}{2}$)	880-2 $\frac{3}{4}$ 857 (900-2 $\frac{3}{4}$)	

SE-3, 13 JUN 2024 to 11 JUL 2024

SE-3, 13 JUN 2024 to 11 JUL 2024