

MIAMI, FLORIDA

AL-5349 (FAA)

24137

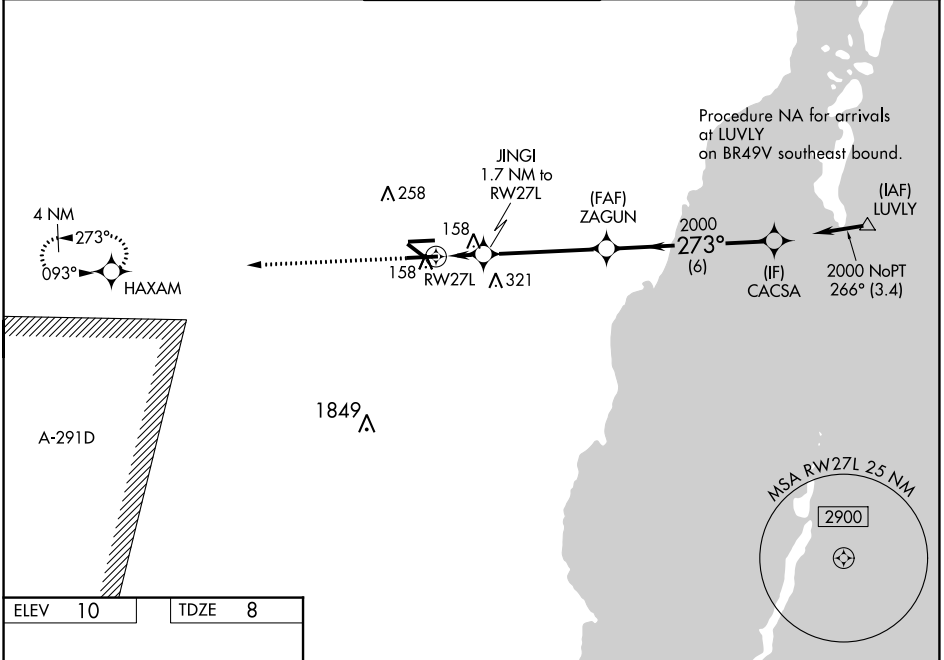
WAAS CH 56400 W27A	APP CRS 273°	Rwy Idg TDZE Apt Elev	6000 8 10
--	------------------------	-----------------------------	--------------------------------------

RNAV (GPS) RWY 27L

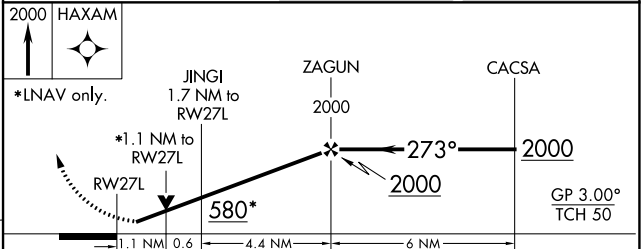
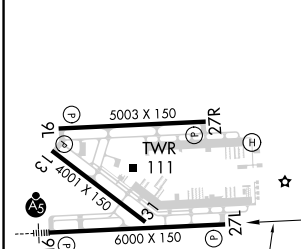
MIAMI EXEC (TMB)

RNP APCH.	<p>⚠ Circling Rwy 13, 31 NA at night. Rwy 27L helicopter visibility reduction below $\frac{3}{4}$ SM NA. For uncompensated Baro-VNAV systems, LNAV/VNAV NA below -15°C or above 43°C. VDP and Baro-VNAV NA when using Miami Intl altimeter setting. When local altimeter setting not received, use Miami Intl altimeter setting and increase LPV DA to 235 feet, LNAV/VNAV DA to 368 feet and all MDA 40 feet, increase LNAV Cats C/D visibility $\frac{1}{4}$ SM.</p>	MISSED APPROACH: Climb to 2000 direct HAXAM and hold.
-----------	--	--

ATIS 124.0	MIAMI APP CON 125.5 354.1	MIAMI EXEC TOWER* 118.9 (CTAF) 0	GND CON 121.7	CLNC DEL 133.0
----------------------	-------------------------------------	---	-------------------------	--------------------------



ELEV 10	TDZE 8
---------	--------



CATEGORY	A	B	C	D
LPV DA		208- $\frac{3}{4}$	200 (200- $\frac{3}{4}$)	
LNAV/VNAV DA		341-1 $\frac{1}{8}$	333 (400-1 $\frac{1}{8}$)	
LNAV MDA	420-1	412 (500-1)	420-1 $\frac{1}{8}$	412 (500-1 $\frac{1}{8}$)
CIRCLING	460-1 450 (500-1)	560-1 550 (600-1)	640-1 $\frac{3}{4}$ 630 (700-1 $\frac{3}{4}$)	640-2 630 (700-2)

- REIL Rwy 13
- HIRL Rwy 9R-27L **0**
- MIRL Rwy 9L-27R
- MIRL Rwy 13-31 **0**

MIAMI, FLORIDA
Amdt 2E 02DEC21

25°39'N-80°26'W

RNAV (GPS) RWY 27L

MIAMI EXEC (TMB)

SE-3, 13 JUN 2024 to 11 JUL 2024

SE-3, 13 JUN 2024 to 11 JUL 2024