

VORTAC FST 116.9 Chan 116	APP CRS 116°	Rwy Idg TDZE Apt Elev	7508 3002 3011
---	------------------------	-----------------------------	---

VOR RWY 12

FORT STOCKTON-PECOS COUNTY (FST)

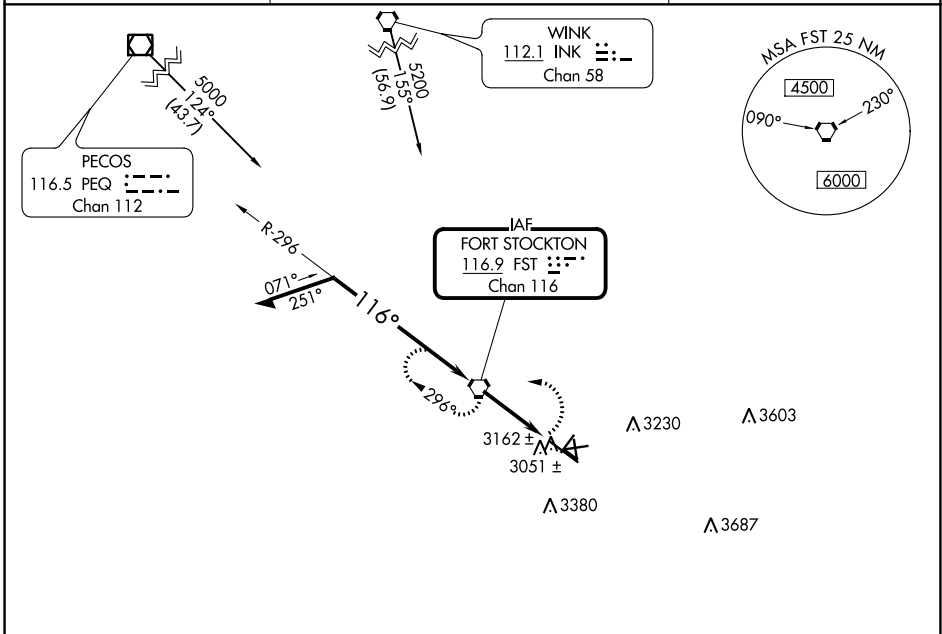
⚠ Circling NA to Rwys 7-25, 11-29 and 16-34.
⚠ Circling Rwy 3, 21, 30 NA at night.

MISSED APPROACH: Climbing left turn to 5000 direct FST VORTAC and hold.

ASOS
118.525

ALBUQUERQUE CENTER
135.875 292.15

UNICOM
122.8 (CTAF) **0**



SC-3, 13 JUN 2024 to 11 JUL 2024

SC-3, 13 JUN 2024 to 11 JUL 2024

ELEV 3011		TDZE 3002	
Remain within 10 NM 4800 → 296° 4800 → 116°		FST VORTAC 5000 FST FST 3.2	
VGSI and descent angles not coincident (VGSI Angle 3.00/TCH 45). 4200 3.48° TCH 45 3.2 NM			
CATEGORY	A	B	D
S-12	3500-1	498 (500-1)	3500-1½ 498 (500-1½)
CIRCLING	3540-1 529 (600-1)	3660-1 649 (700-1)	3740-2 729 (800-2)
			3760-2½ 749 (800-2½)
MRL Rwys 3-21 and 12-30 0 FAF to MAP 3.2 NM			
	Knots	60	90 120 150 180
	Min:Sec	3:12	2:08 1:36 1:17 1:04