

VOR BUD 109.8	APP CRS 261°	Rwy Idg TDZE Apt Elev N/A N/A 993
-------------------------	------------------------	---

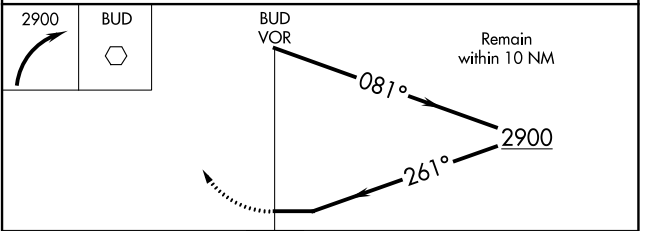
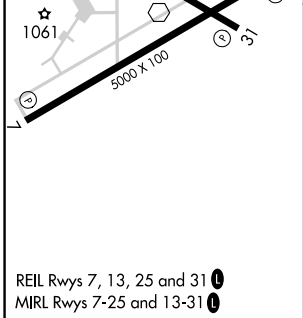
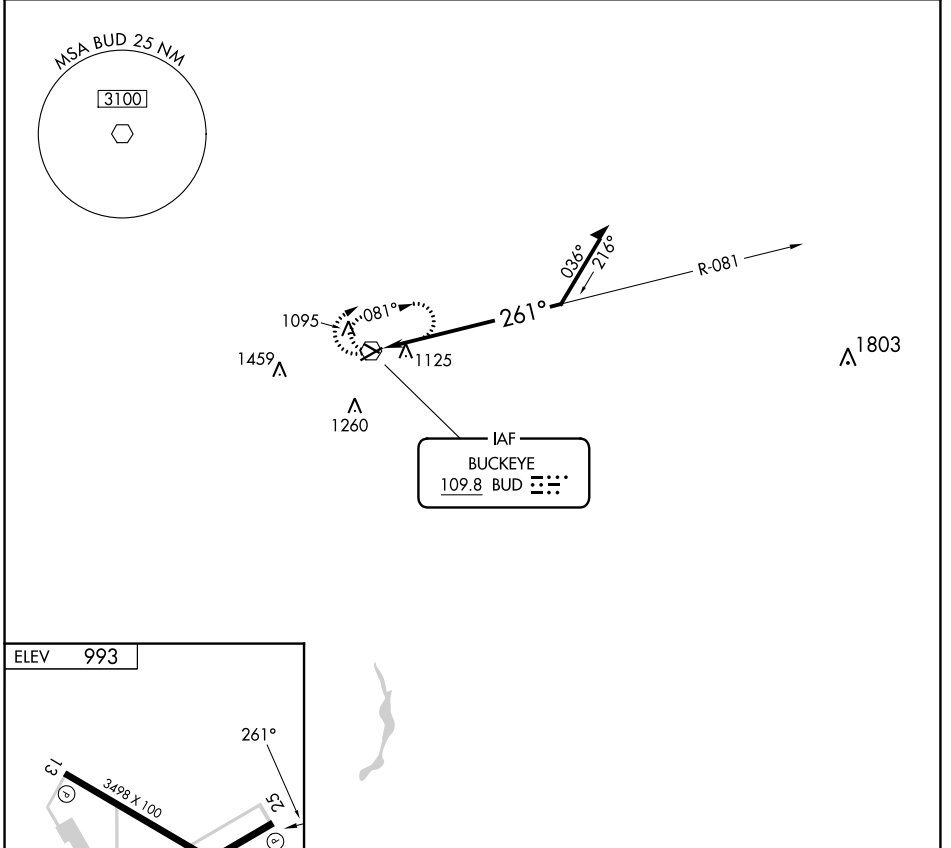
VOR-A
MARION MUNI (MNN)

RADAR required for procedure entry.

⚠ When local altimeter setting not received, use Ohio State University altimeter setting: increase MDA 100 feet and visibility Cat C/D ¼ SM.

MISSED APPROACH: Climbing right turn to 2900 in BUD VOR holding pattern.

ASOS 119.975	CLEVELAND APP CON ★ 124.2 360.65	CLNC DEL 126.8	UNICOM 122.8 (CTAF) 0
------------------------	--	--------------------------	---------------------------------



CATEGORY	A	B	C	D
CIRCLING	1640-1	647 (700-1)	1700-2 707 (800-2)	1820-2¾ 827 (900-2¾)

EC-2, 13 JUN 2024 to 11 JUL 2024

EC-2, 13 JUN 2024 to 11 JUL 2024