

LOC/DME I-ETI 110.7 Chan 44	APP CRS 091°	Rwy ldg 5350 TDZE 19 Apt Elev 19
---	------------------------	---

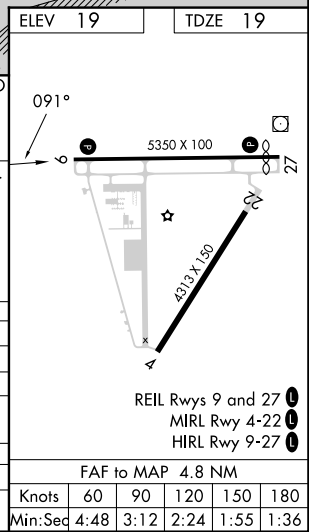
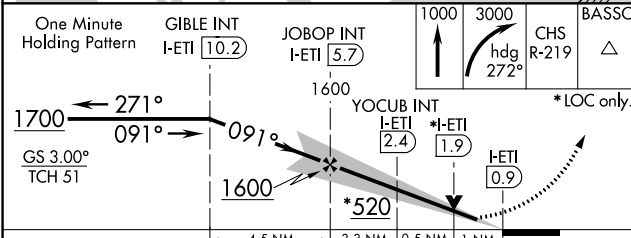
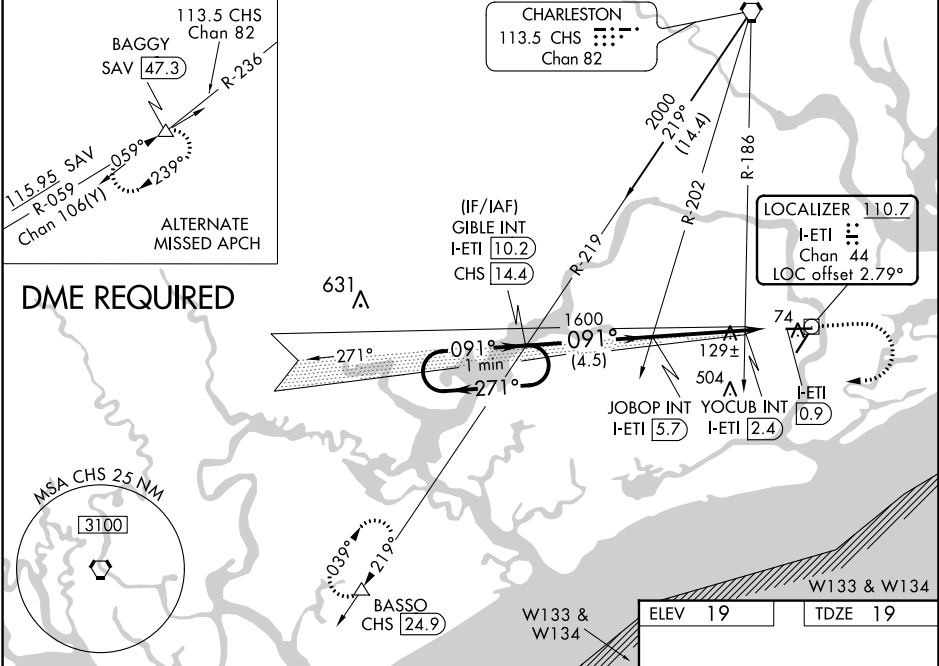
ILS or LOC RWY 9

CHARLESTON EXEC (JZI)

▼ DME required. Helicopter visibility reduction below 3/4 SM NA. When local altimeter setting not received, use Charleston AFB/Intl altimeter setting and increase DA to 307 feet and all MDAs 40 feet, increase S-ILS 9 visibility all Cats 1/8 SM; increase S-LOC 9 and Circling Cats C/D visibility 1/4 SM; increase S-LOC YOCUB fix minimums Cats C/D visibility 1/4 SM and Circling YOCUB fix minimums Cats C/D visibility 1/4 SM. VDP NA when using Charleston AFB/Intl altimeter setting.

MISSED APPROACH: Climb to 1000 then climbing right turn to 3000 on heading 272° and on CHS VORTAC R-219 to BASSO/CHS 24.9 DME and hold.

AWOS-3 123.775	CHARLESTON APP CON 120.7 306.925	CLNC DEL 119.85	UNICOM 122.8 (CTAF)
--------------------------	--	---------------------------	-------------------------------



CATEGORY	A	B	C	D
S-ILS 9	275-3/4 256 (300-3/4)			
S-LOC 9	520-1	501 (600-1)	520-13/8	501 (600-13/8)
CIRCLING	520-1	501 (600-1)	860-21/2	860-23/4
YOCUB FIX MINIMUMS (DUAL VOR RECEIVERS or DME REQUIRED)				
S-LOC 9	380-1	361 (400-1)	380-11/8	361 (400-11/8)
CIRCLING	460-1	480-1	860-21/2	860-23/4
	441 (500-1)	461 (500-1)	841 (900-21/2)	841 (900-23/4)

FAF to MAP 4.8 NM					
Knots	60	90	120	150	180
Min:Seq	4:48	3:12	2:24	1:55	1:36

SE-2, 13 JUN 2024 to 11 JUL 2024

SE-2, 13 JUN 2024 to 11 JUL 2024