

WINDER, GEORGIA

AL-5360 (FAA)

24025

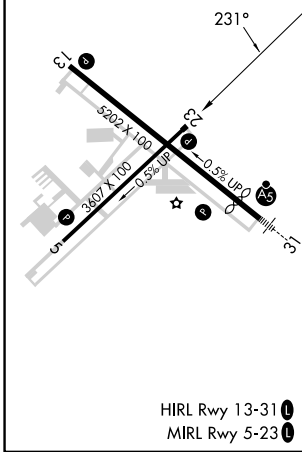
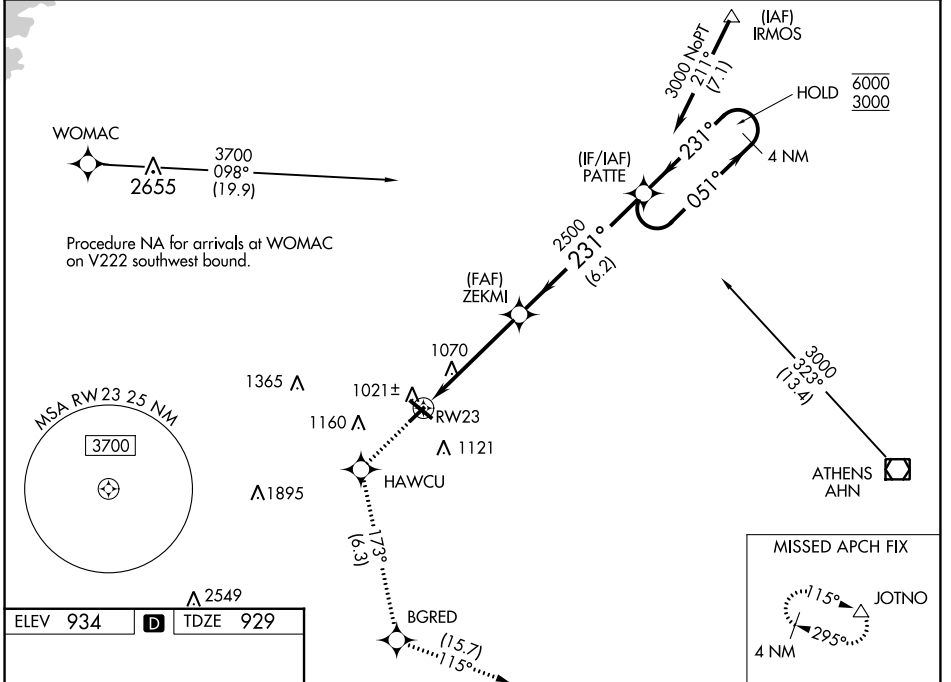
WAAS CH 82516 W23A	APP CRS 231°	Rwy Idg TDZE Apt Elev	3607 929 934
--	------------------------	-----------------------------	---

RNAV (GPS) RWY 23

BARROW COUNTY (WDR)

RNP APCH.	MISSED APPROACH: Climb to 3000 direct HAWCU and on track 173° to BGRED and on track 115° to JOTNO and hold.
-----------	---

AWOS-3 118.575	ATLANTA APP CON ★ 132.475 291.1	UNICOM 123.0 (CTAF)
--------------------------	---	-------------------------------



ELEV 934	D	TDZE 929				
3000	HAWCU	tr 173°	BGRED	tr 115°	JOTNO	PATTE
						4 NM Holding Pattern
			ZEKMI	2500	231°	051° → 6000 ← 231° 3000
						GP 3.00° TCH 40
			4.8 NM	6.2 NM		
CATEGORY	A	B	C	D		
LPV DA		1179-1	250 (300-1)			
LNAV/VNAV DA		1274-1	345 (400-1)			
LNAV MDA	1320-1	391 (400-1)	1320-1½	391 (400-1½)		
CIRCLING	1400-1 466 (500-1)	1580-1 646 (700-1)	1660-2 726 (800-2)	1660-2¼ 726 (800-2¼)		

WINDER, GEORGIA
Orig-D 20MAY21

33°59'N-83°40'W

BARROW COUNTY (WDR) RNAV (GPS) RWY 23

SE-4, 13 JUN 2024 to 11 JUL 2024

SE-4, 13 JUN 2024 to 11 JUL 2024