

(BEAVY6.BEAVY) 24081

# BEAVY SIX DEPARTURE (RNAV)

ROCK HILL/YORK COUNTY/BRYANT FLD (UZA)

AL-5361 (FAA)

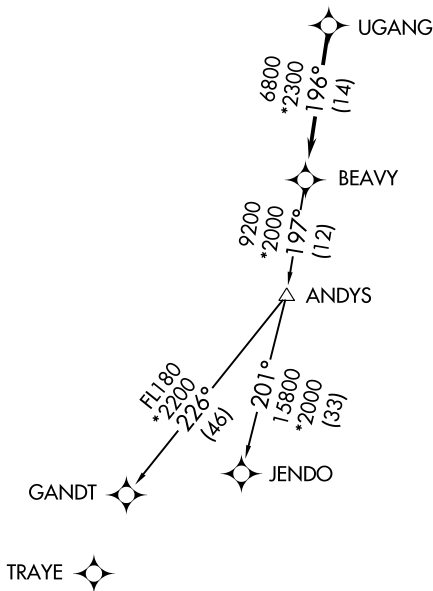
ROCK HILL, SOUTH CAROLINA

CHARLOTTE DEP CON  
120.05 307.8  
ASOS  
120.775  
UNICOM (CTAF)  
123.05

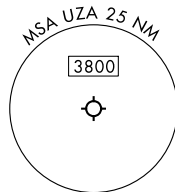
RNAV 1-DME/DME/IRU or GPS.

RADAR required.

**TOP ALTITUDE:  
3000**



**TAKEOFF MINIMUMS**  
Rwys 2, 20: Standard.



- NOTE: For turbo jets only.
- NOTE: If unable to accept climb rates, advise ATC on initial contact.
- NOTE: Transponder code will be issued via PDC or Charlotte CLNC DEL.
- NOTE: Upon reaching 10000 MSL, accelerate to and maintain 280K, if unable advise ATC.

NOTE: Chart not to scale.

## DEPARTURE ROUTE DESCRIPTION

Climb on heading assigned by ATC, on RADAR vectors to UGANG, then on depicted route to BEAVY. Then on assigned transition maintain 3000, expect clearance to filed altitude within 10 minutes after departure.

GANDT TRANSITION (BEAVY6.GANDT)  
JENDO TRANSITION (BEAVY6.JENDO)

**BEAVY SIX DEPARTURE (RNAV)**

(BEAVY6.BEAVY) 21MAR24

ROCK HILL, SOUTH CAROLINA  
ROCK HILL/YORK COUNTY/BRYANT FLD (UZA)

SE-2, 13 JUN 2024 to 11 JUL 2024

SE-2, 13 JUN 2024 to 11 JUL 2024