

(ESTRR5.ESTRR) 24081

# ESTRR FIVE DEPARTURE (RNAV)

ROCK HILL/YORK COUNTY/BRYANT FLD (UZA)  
ROCK HILL, SOUTH CAROLINA

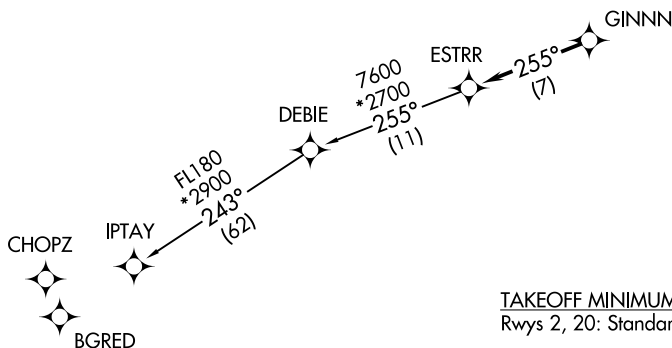
AL-5361 (FAA)

**TOP ALTITUDE:**  
**3000**

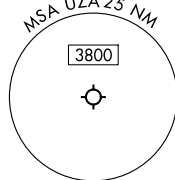
RNAV 1 - DME/DME/IRU or GPS.

RADAR required.

CHARLOTTE DEP CON  
120.05 307.8  
ASOS  
120.775  
UNICOM (CTAF)  
123.05



- NOTE: For turbo jets only.
- NOTE: If unable to accept climb rates, advise ATC on initial contact.
- NOTE: Transponder code will be issued via PDC or Charlotte CLNC DEL.
- NOTE: Upon reaching 10000 MSL, accelerate to and maintain 280K, if unable advise ATC.



NOTE: Chart not to scale.



## DEPARTURE ROUTE DESCRIPTION

Climb on heading assigned by ATC, on RADAR vectors to GINNN, then on track 255° to ESTRR, then on IPTAY Transition. Maintain 3000, expect filed altitude within 10 minutes after departure.

IPTAY TRANSITION (ESTRR5.IPTAY)

**ESTRR FIVE DEPARTURE (RNAV)**  
(ESTRR5.ESTRR) 21MAR24

ROCK HILL, SOUTH CAROLINA  
ROCK HILL/YORK COUNTY/BRYANT FLD (UZA)

SE-2, 13 JUN 2024 to 11 JUL 2024

SE-2, 13 JUN 2024 to 11 JUL 2024