

WAAS CH 99501 W16A	APP CRS 159°	Rwy Idg TDZE Apt Elev	5002 1278 1278
--	------------------------	-----------------------------	---

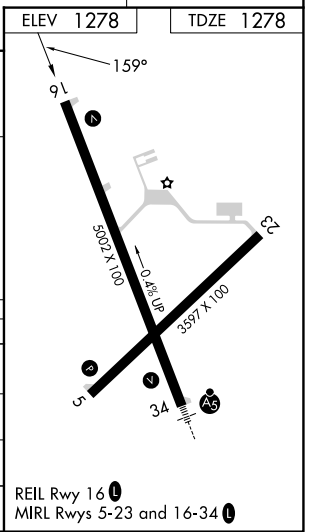
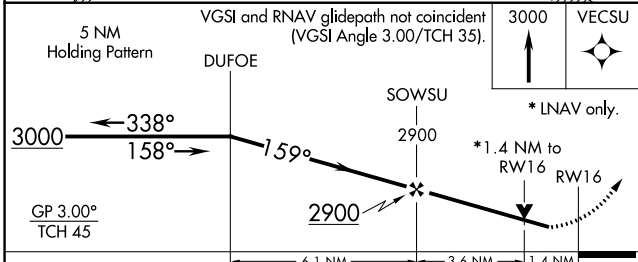
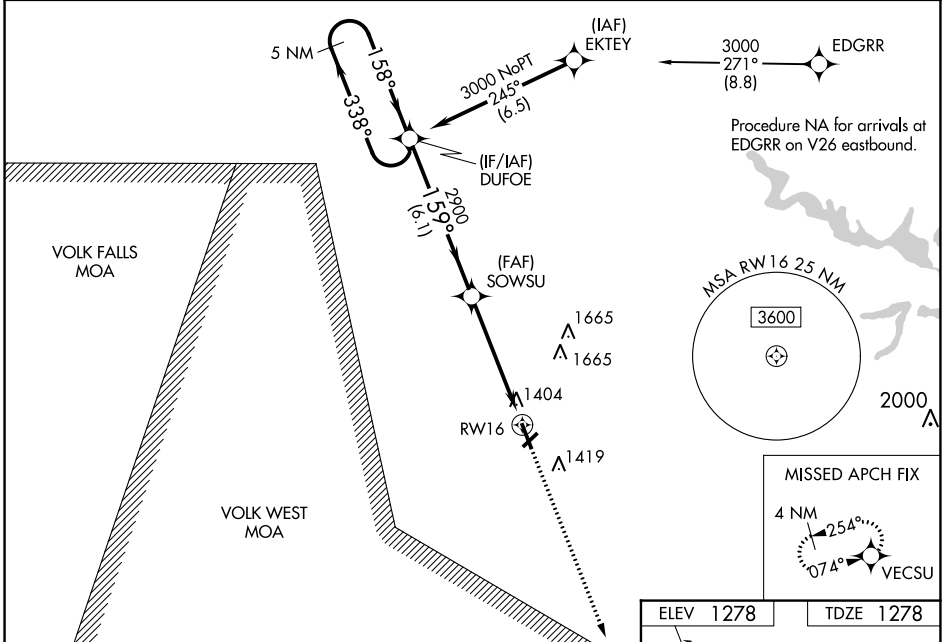
RNAV (GPS) RWY 16

MARSHFIELD MUNI (MFI)

⚠ For uncompensated Baro-VNAV systems, LNAV/VNAV NA below -21°C (-5°F) or above 54°C (130°F). Baro-VNAV and VDP NA when using Central Wisconsin altimeter setting. DME/DME RNP-0.3 NA. Rwy 16 helicopter visibility reduction below 3/4 SM NA. When local altimeter setting not received, use Central Wisconsin altimeter setting and increase all DA 56 feet and all visibility 1/8 SM, increase all MDA 60 feet and LNAV Cat C/D visibility 1/4 SM.

MISSED APPROACH:
Climb to 3000 direct VECSU and hold.

ASOS 121.575	MINNEAPOLIS CENTER 124.4 317.7	UNICOM 123.0 (CTAF)
------------------------	--	-------------------------------



CATEGORY	A	B	C	D
LPV DA		1639-1¼	361 (400-1¼)	
LNAV/VNAV DA		1682-1¾	404 (500-1¾)	
LNAV MDA	1760-1	482 (500-1)	1760-1¾	482 (500-1¾)
C CIRCLING	1760-1	482 (500-1)	2020-2¼ 742 (800-2¼)	2020-2½ 742 (800-2½)

EC-3, 13 JUN 2024 to 11 JUL 2024

EC-3, 13 JUN 2024 to 11 JUL 2024