

WAAS CH <b>81913</b> <b>W05A</b>	APP CRS <b>047°</b>	Rwy Idg TDZE Apt Elev	<b>6002</b> <b>1184</b> <b>1201</b>
--	------------------------	-----------------------------	---

AL-5369 (FAA)

# RNAV (GPS) RWY 5

SHENANDOAH VALLEY RGNL (SHD)

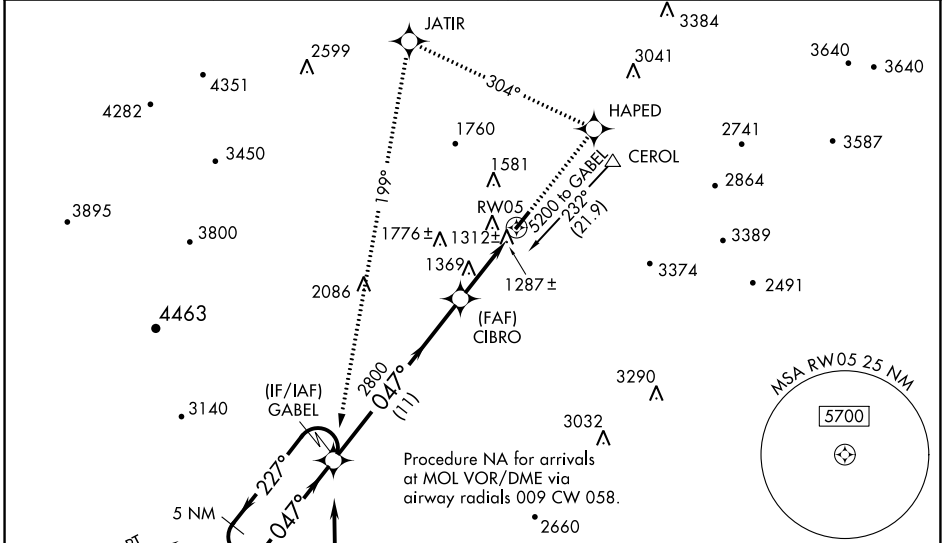
RNP APCH.

**▽** For inoperative MALSRS when using Charlottesville altimeter setting, increase LPV visibility to 1 1/4 mile. For uncompensated Baro-VNAV systems, LNAV/VNAV NA below -17°C or above 46°C. Baro-VNAV and VDP NA when using Charlottesville altimeter setting. When local altimeter setting not received, use Charlottesville altimeter setting and increase all DA 130 feet and all MDA 140 feet. Increase LPV all Cats visibility 1/4 SM, LNAV/VNAV all Cats 1/2 SM, LNAV Cat C/D 1/4 SM, Circling Cat C 1/2 SM and Cat D 1/4 SM.

**▲** MALSRS

MISSED APPROACH: Climb to 5200 direct HAPED and left turn via track 304° to JATIR and left turn via track 199° to GABEL and hold.

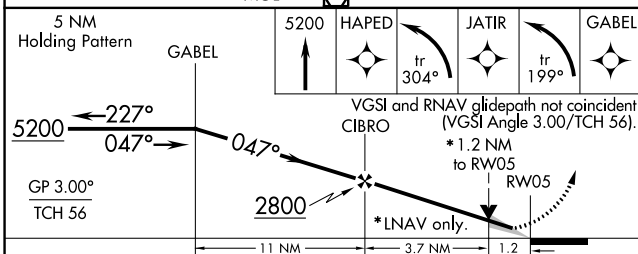
AWOS-3 <b>124.925</b>	POTOMAC APP CON <b>132.85 323.125</b>	CLNC DEL <b>118.35</b>	UNICOM <b>123.0 (CTAF) 0</b>
--------------------------	--	---------------------------	---------------------------------



NE-3, 13 JUN 2024 to 11 JUL 2024

NE-3, 13 JUN 2024 to 11 JUL 2024

ELEV 1201	<b>D</b> TDZE 1184
-----------	--------------------



CATEGORY	A	B	C	D
LPV DA	1384-1/2 200 (200-1/2)			
LNAV/VNAV DA	1563-3/4 379 (400-3/4)			
LNAV MDA	1620-1/2 436 (500-1/2)	1620-3/4 436 (500-3/4)		1620-1 436 (500-1)
CIRCLING	1660-1 459 (500-1)	1760-1 559 (600-1)	1900-2 699 (700-2)	2060-2 3/4 859 (900-2 3/4)

