

WAAS CH <b>78026</b> <b>W23A</b>	APP CRS <b>230°</b>	Rwy Idg TDZE Apt Elev	<b>5005</b> <b>3443</b> <b>3443</b>
--	------------------------	-----------------------------	---

# RNAV (GPS) RWY 23

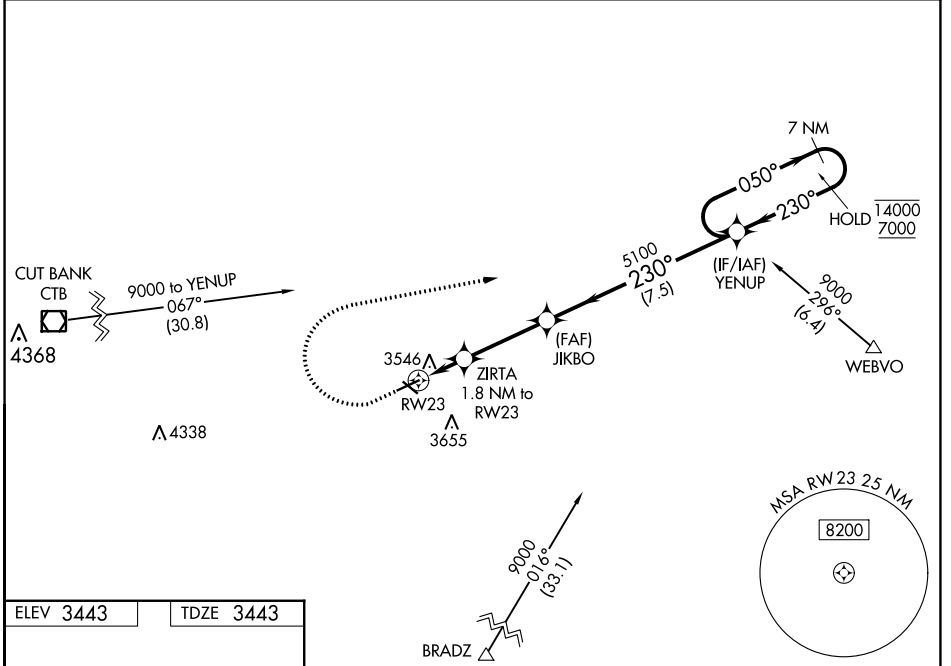
SHELBY (SBX)

RNP APCH - GPS.

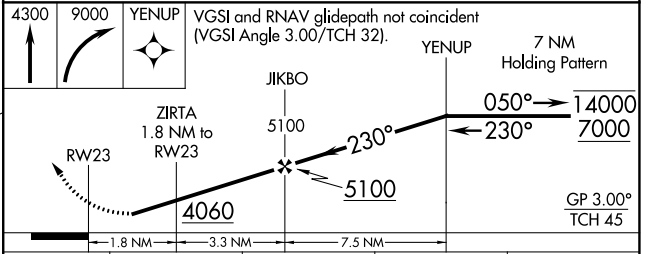
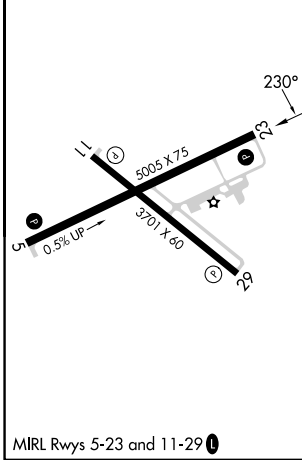
**⚠** Rwy 23 helicopter visibility reduction below ¼ SM NA. Baro-VNAV NA when using Cut Bank altimeter setting. For uncompensated Baro-VNAV systems, LNAV/VNAV NA below -21°C or above 54°C. When local altimeter setting not received, use Cut Bank altimeter setting.

**⚠** MISSED APPROACH: Climb to 4300 then climbing right turn to 9000 direct YENUP and hold, continue climb-in-hold to 9000.

AWOS-3PT <b>128.325</b>	SALT LAKE CITY CENTER <b>133.4 285.4</b>	UNICOM <b>122.8 (CTAF) 0</b>
----------------------------	---	---------------------------------



ELEV 3443	TDZE 3443
-----------	-----------



CATEGORY	A	B	C	D
LPV DA		3799-1	356 (400-1)	
LNAV/VNAV DA		3813-1	370 (400-1)	
LNAV MDA	3920-1	477 (500-1)	3920-1⅓	477 (500-1⅓)
<b>CIRCLING</b>	4020-1 577 (600-1)	4080-1 637 (700-1)	4100-1¾ 657 (700-1¾)	4220-2½ 777 (800-2½)

NW-1, 13 JUN 2024 to 11 JUL 2024

NW-1, 13 JUN 2024 to 11 JUL 2024