

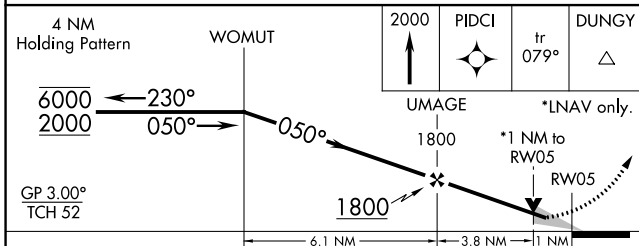
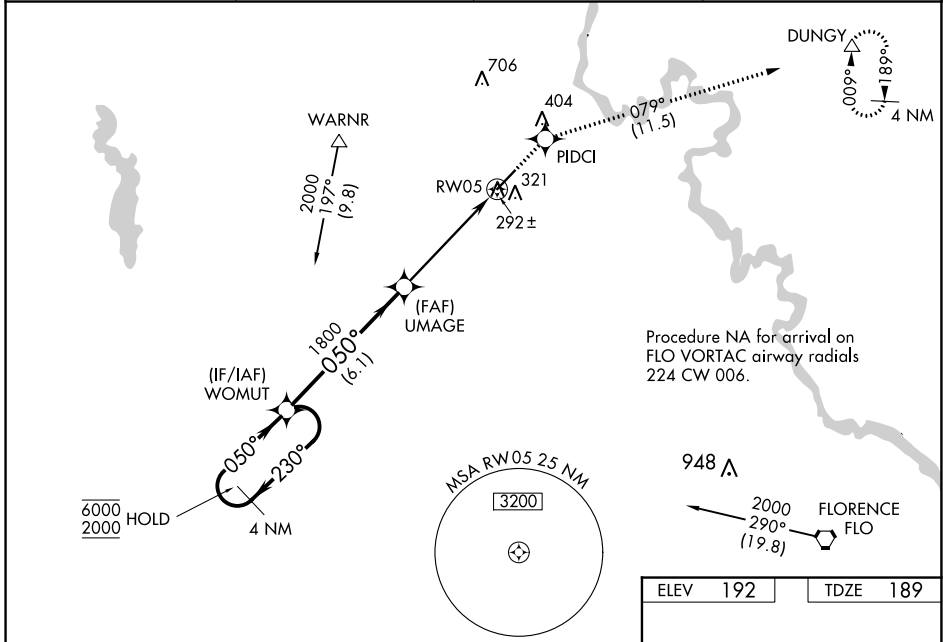
WAAS CH <b>42704</b> <b>W05A</b>	APP CRS <b>050°</b>	Rwy Idg TDZE Apt Elev	<b>5500</b> <b>189</b> <b>192</b>
--	------------------------	-----------------------------	---

# RNAV (GPS) RWY 5

DARLINGTON COUNTY (UDG)

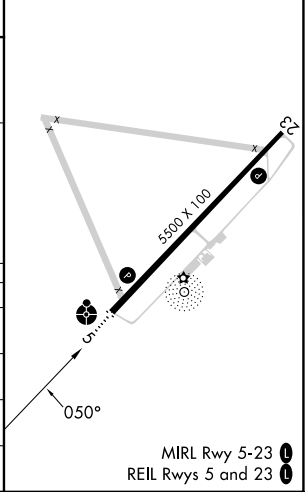
RNP APCH.		ODALS	MISSED APPROACH: Climb to 2000 direct PIDCI and on track 079° to DUNGY and hold.
<p>⚠ Inop table does not apply. For uncompensated Baro-VNAV systems, LNAV/VNAV NA below -15°C or above 54°C.</p>			

AWOS-3PT <b>119.925</b>	FLORENCE APP CON * <b>118.6 341.7</b>	CLNC DEL <b>118.55</b>	UNICOM <b>123.0(CTAF) 0</b>
----------------------------	--	---------------------------	--------------------------------



ELEV 192	TDZE 189
----------	----------

CATEGORY	A	B	C	D
LPV DA	493-1 304 (400-1)			
LNAV/VNAV DA	562-1¼ 373 (400-1¼)			
LNAV MDA	560-1 371 (400-1)		560-1¼ 371 (400-1¼)	
CIRCLING	640-1 448 (500-1)	660-1 468 (500-1)	720-1½ 528 (600-1½)	1020-2¾ 828 (900-2¾)



SE-2, 13 JUN 2024 to 11 JUL 2024

SE-2, 13 JUN 2024 to 11 JUL 2024