

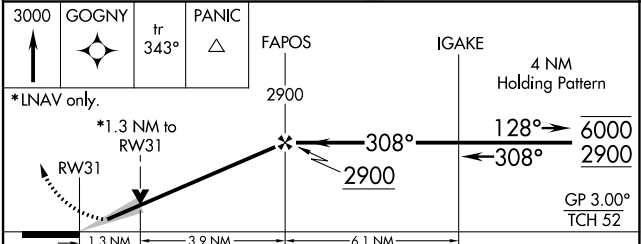
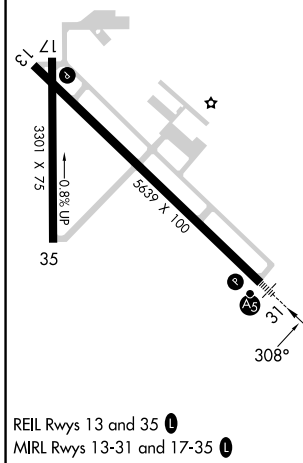
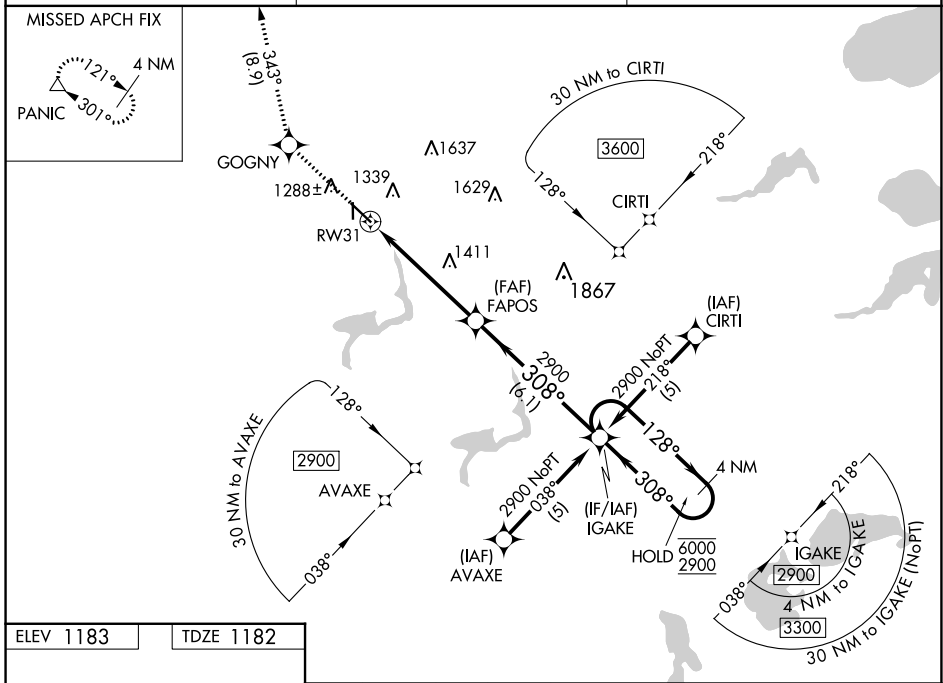
WAAS CH 42614 W31A	APP CRS 308°	Rwy Idg 5639 TDZE 1182 Apt Elev 1183
--	------------------------	---

RNAV (GPS) RWY 31

FERGUS FALLS MUNI/EINAR MICKELSON FLD (FFM)

RNP APCH-GPS.	MALSR	MISSED APPROACH: Climb to 3000 direct GOGNY and on track 343° to PANIC and hold.
<p>▼ For uncompensated Baro-VNAV systems, LNAV/VNAV NA below -17°C or above 54°C. For inop ALS, increase LNAV/VNAV all Cats visibility to 1 SM and LNAV Cat D visibility to 1½ SM.</p>		

AWOS-3PT 119.05	MINNEAPOLIS CENTER 126.1 269.2	UNICOM 122.8 (CTAF) 0
---------------------------	--	---------------------------------



CATEGORY	A	B	C	D
LPV DA		1382-½	200 (200-½)	
LNAV/VNAV DA		1545-⅝	363 (400-⅝)	
LNAV MDA	1640-½	458 (500-½)	1640-⅞	458 (500-⅞)
CIRCLING	1640-1 457 (500-1)	1740-1 557 (600-1)	1820-1¼ 637 (700-1¼)	1940-2½ 757 (800-2½)

NC-1, 13 JUN 2024 to 11 JUL 2024

NC-1, 13 JUN 2024 to 11 JUL 2024