

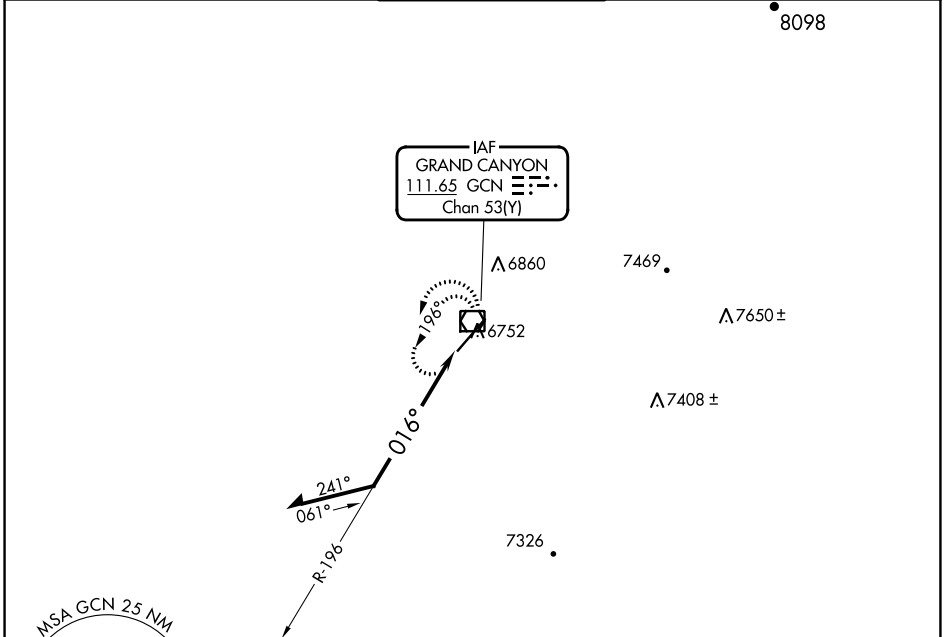
VOR/DME GCN <b>111.65</b> Chan <b>53(Y)</b>	APP CRS <b>016°</b>	Rwy Idg <b>8999</b> TDZE <b>6556</b> Apt Elev <b>6609</b>
---	------------------------	---

# VOR RWY 3

GRAND CANYON NTL PARK (GCN)

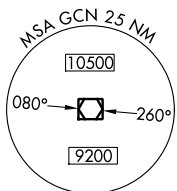
**▼** Rwy 3 helicopter visibility reduction below 3/4 SM NA. **MISSED APPROACH:** Climb to 9100 in GCN VOR/DME holding pattern.

ATIS <b>124.3</b>	LOS ANGELES CENTER <b>124.85 319.2</b>	CANYON TOWER* <b>119.0 (CTAF) 0</b>	GND CON <b>121.9</b>	UNICOM <b>122.95</b>
----------------------	---	--	-------------------------	-------------------------



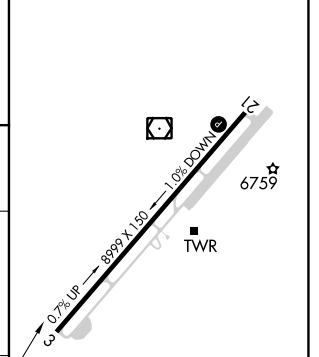
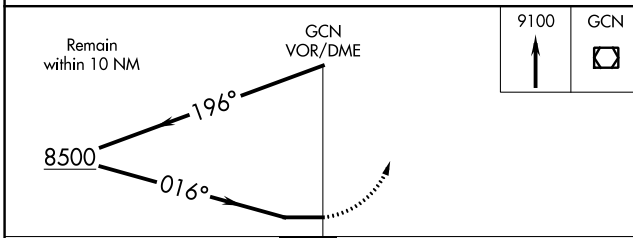
SW-4, 13 JUN 2024 to 11 JUL 2024

SW-4, 13 JUN 2024 to 11 JUL 2024



Descend in GCN VOR/DME holding pattern to 11 000 before commencing procedure turn.

ELEV 6609	<b>D</b> TDZE 6556
-----------	--------------------



CATEGORY	A	B	C	D
S-3	7180-1	624 (600-1)	7180-1¾	624 (600-1¾)
<b>C</b> CIRCLING	7180-1 571 (600-1)	7200-1 591 (600-1)	7280-2 671 (700-2)	7620-3 1011 (1100-3)

REIL Rwy 21  
MIRL Rwy 3-21