

WAAS CH <b>99620</b> <b>W30A</b>	APP CRS <b>303°</b>	Rwy Idg TDZE Apt Elev	<b>5001</b> <b>2294</b> <b>2296</b>
--	------------------------	-----------------------------	---

# RNAV (GPS) RWY 30

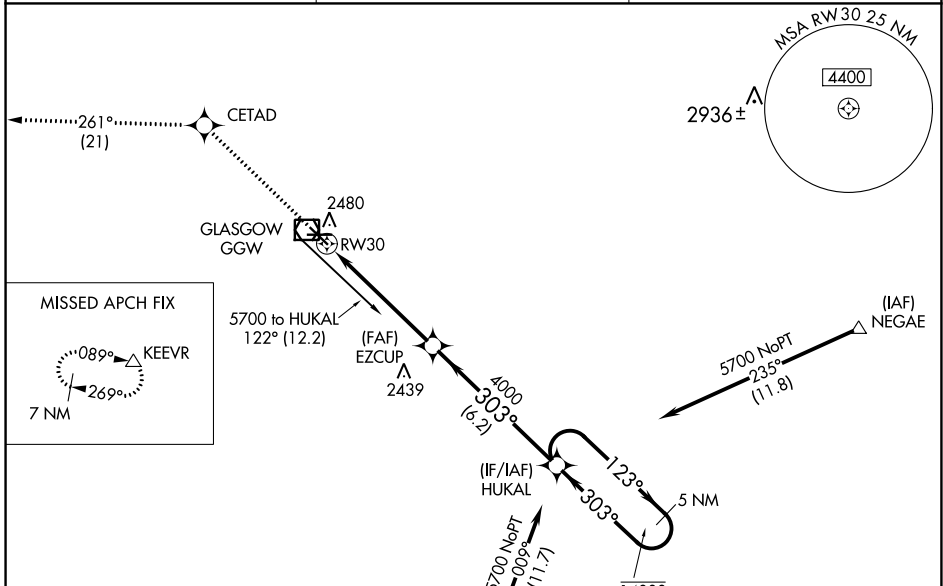
WOKAL FLD/GLASGOW-VALLEY COUNTY (GGW)

RNP APCH.

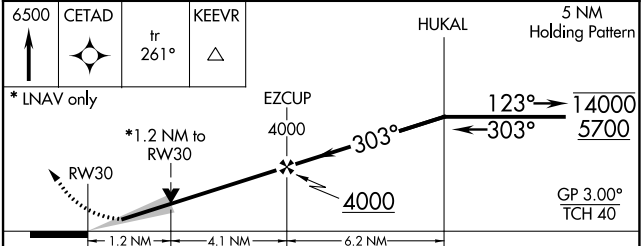
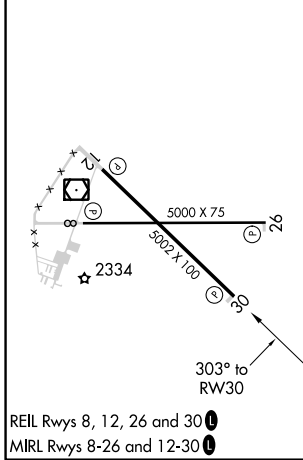
**⚠** For uncompensated Baro-VNAV systems, LNAV-VNAV NA below -14°C or above 54°C. When local altimeter setting not received, use Wolf Point altimeter setting and increase LPV DA to 2635 feet and all visibilities  $\frac{3}{8}$  SM; increase LNAV/VNAV DA to 2728 feet and all visibilities  $\frac{1}{2}$  SM; increase all MDAs 160 feet and LNAV Cats C/D and Circling Cat D visibility  $\frac{1}{2}$  SM, Circling Cat C  $\frac{1}{4}$  SM. Baro-VNAV and VDP NA when using Wolf Point altimeter setting.

MISSED APPROACH: Climb to 6500 direct CETAD and on track 261° to KEEVR and hold.

ASOS <b>135.175</b>	SALT LAKE CENTER <b>126.85 305.2</b>	UNICOM <b>122.8 (CTAF) 0</b>
------------------------	---	---------------------------------



ELEV 2296	<b>D</b>	TDZE 2294
-----------	----------	-----------



CATEGORY	A	B	C	D
LPV DA	2494- $\frac{3}{4}$		200 (200- $\frac{3}{4}$ )	
LNAV/VNAV DA	2587-1		293 (300-1)	
LNAV MDA	2700-1	406 (500-1)	2700-1 $\frac{1}{8}$	406 (500-1 $\frac{1}{8}$ )
CIRCLING	2780-1	484 (500-1)	2780-1 $\frac{1}{2}$ 484 (500-1 $\frac{1}{2}$ )	2900-2 604 (700-2)

NW-1, 13 JUN 2024 to 11 JUL 2024

NW-1, 13 JUN 2024 to 11 JUL 2024