

WAAS CH 69316 W17A	APP CRS 180°	Rwy Idg TDZE Apt Elev	6003 213 213
--	------------------------	-----------------------------	---

RNAV (GPS) RWY 17

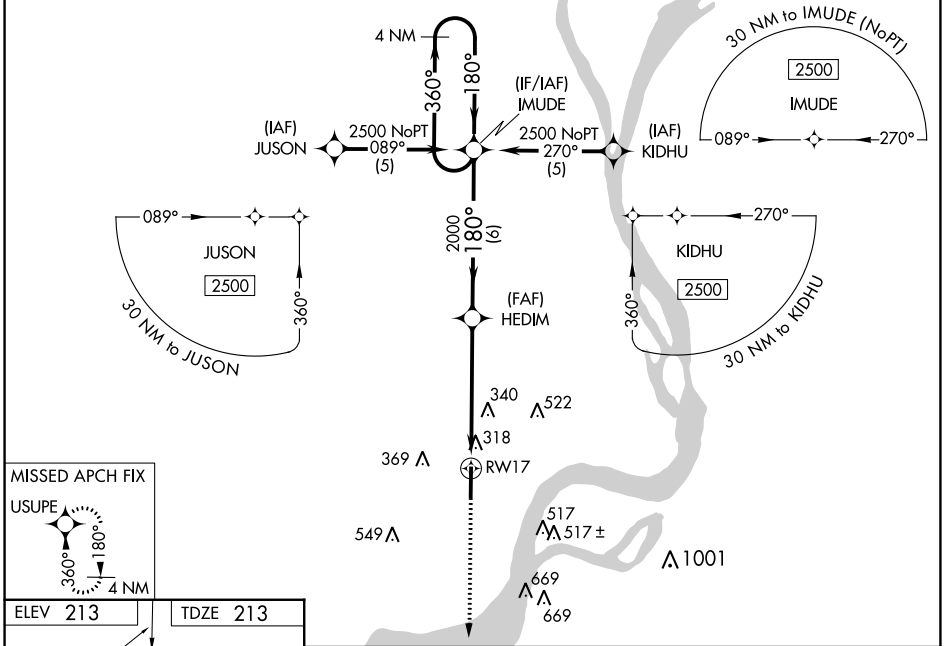
WEST MEMPHIS MUNI (A W M)

RNP APCH.

⚠ For uncompensated Baro-VNAV systems, LNAV/VNAV NA below -15°C (5°F) or above 48°C (118°F). When local altimeter setting not received, use Memphis Intl altimeter setting and increase LPV DA to 513 feet, LNAV/VNAV DA to 644 feet and all visibilities ¼ SM; increase all MDAs 60 feet and increase visibility LNAV Cat C and Circling Cat C and D ½ SM. Baro-VNAV and VDP NA when using Memphis Intl altimeter setting.

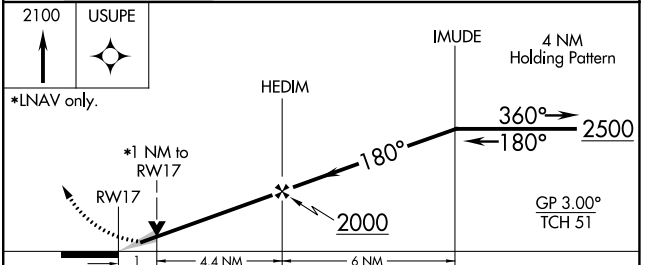
MALSR MISSED APPROACH: Climb to 2100 direct USUPE and hold.

ASOS 118.175	MEMPHIS APP CON 119.1 291.6	CLNC DEL 121.7	UNICOM 123.05 (CTAF)
------------------------	---------------------------------------	--------------------------	--------------------------------



ELEV 213 TDZE 213

MIRL Rwy 17-35
REIL Rwy 35



CATEGORY	A	B	C	D
LPV DA		463-½	250 (300-½)	
LNAV/VNAV DA		594-¾	381 (400-¾)	
LNAV MDA	600-½	387 (400-½)	600-⅝ 387 (400-⅝)	600-1 387 (400-1)
CIRCLING	640-1 427 (500-1)	740-1 527 (600-1)	800-1½ 587 (600-1½)	920-2¼ 707 (800-2¼)

SC-1, 13 JUN 2024 to 11 JUL 2024

SC-1, 13 JUN 2024 to 11 JUL 2024