

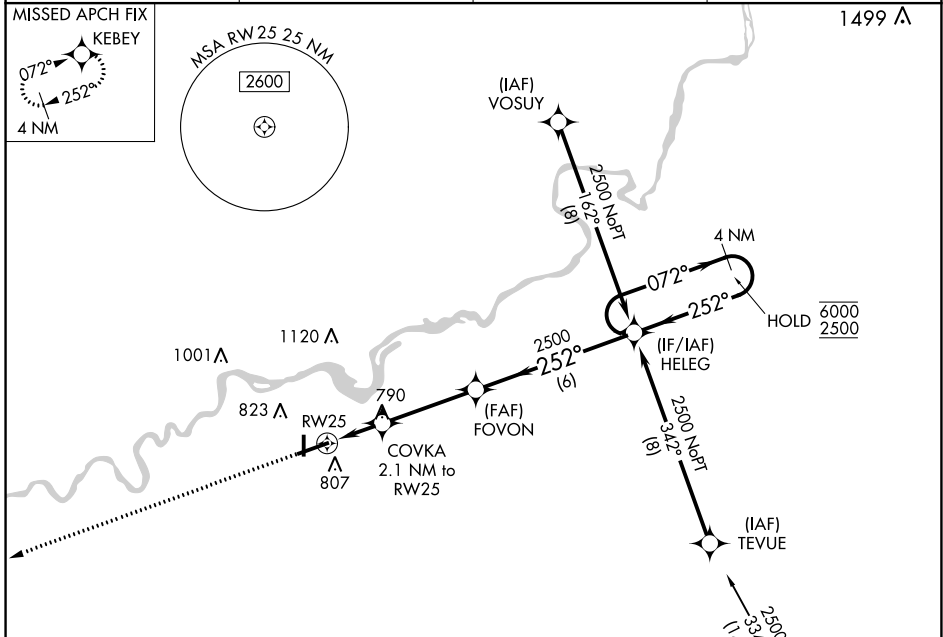
WAAS CH <b>57910</b> <b>W25A</b>	APP CRS <b>252°</b>	Rwy Idg TDZE Apt Elev	<b>6499</b> <b>647</b> <b>648</b>
--	------------------------	-----------------------------	---

# RNAV (GPS) RWY 25

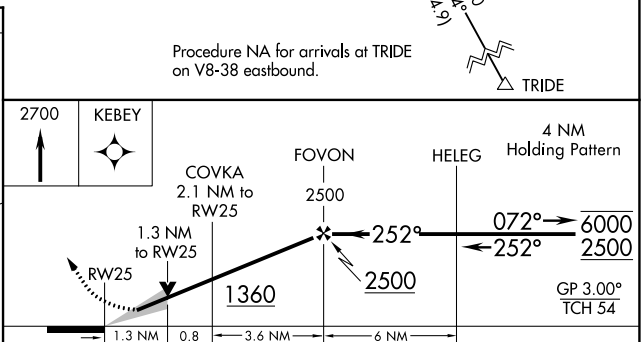
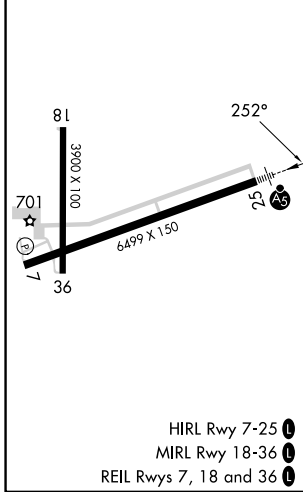
WHITESIDE COUNTY/JOS H BITTORF FLD (SQI)

RNP APCH - GPS.		MALSR	MISSED APPROACH: Climb to 2700 direct <b>KEBEY</b> and hold.
For uncompensated Baro-VNAV systems, LNAV/VNAV NA below -16°C or above 54°C.			

AWOS-3PT <b>119.175</b>	ROCKFORD APP CON <b>126.0 327.0</b>	CINC DEL <b>128.0</b>	UNICOM <b>123.0 (CTAF)</b>
----------------------------	--	--------------------------	-------------------------------



ELEV <b>648</b>	TDZE <b>647</b>
-----------------	-----------------



CATEGORY	A	B	C	D
LPV DA		847-1/2	200 (200-1/2)	
LNAV/VNAV DA		1047-5/8	400 (400-5/8)	
LNAV MDA	1100-1/2	453 (500-1/2)	1100-7/8	453 (500-7/8)
CIRCLING	1140-1	492 (500-1)	1160-1 1/2	1480-2 3/4
			512 (600-1 1/2)	832 (900-2 3/4)

EC-3, 13 JUN 2024 to 11 JUL 2024

EC-3, 13 JUN 2024 to 11 JUL 2024