

WAAS CH 93610 W16A	APP CRS 157°	Rwy Idg 4742 TDZE 26 Apt Elev 32
--	------------------------	---

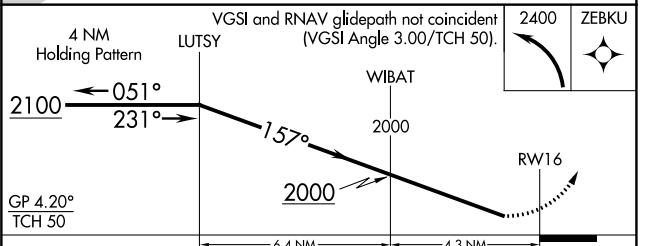
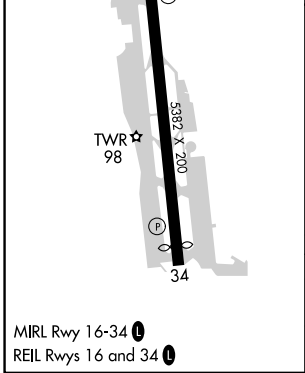
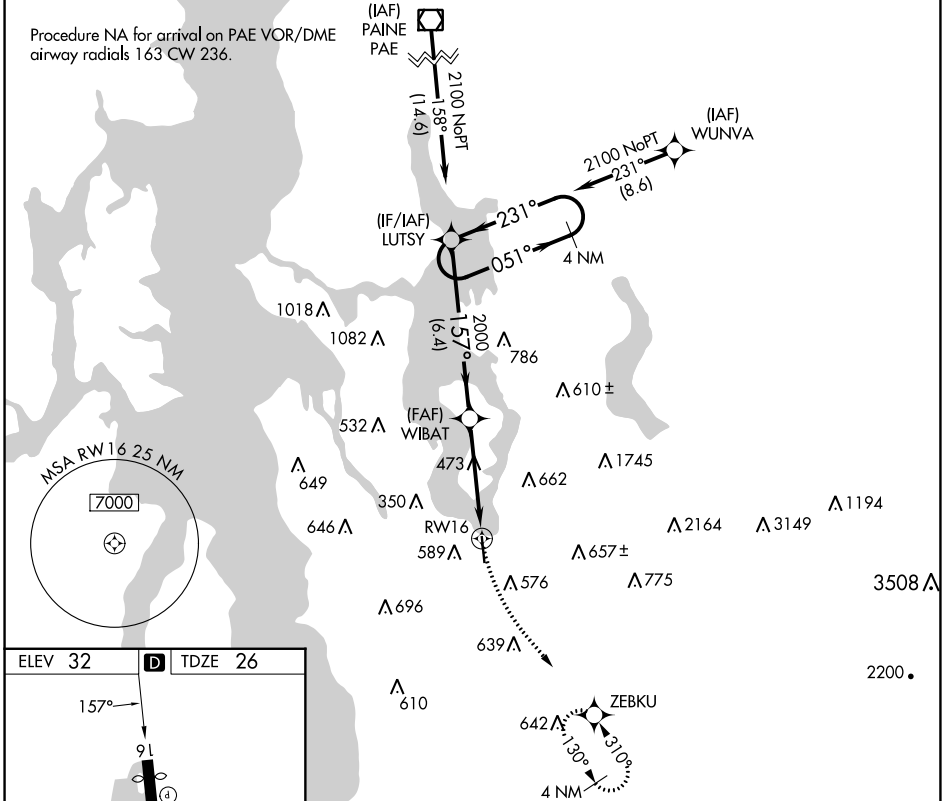
RNAV (GPS) Z RWY 16

RENTON MUNI (RNT)

▼ For uncompensated Baro-VNAV systems, LNAV/VNAV NA below -5°C (23°F) or above 48°C (119°F). DME/DME RNP-0.3 NA. Rwy 16 helicopter visibility reduction below ¼ SM NA.

MISSED APPROACH: Climbing left turn to 2400 direct ZEBKU and hold.

ATIS 126.95	SEATTLE APP CON 123.9 338.2 (RWY 16) 125.9 306.9 (RWY 34)	RENTON TOWER* 124.7 (CTAF) 0 256.9	GND CON 121.6 256.9	UNICOM 122.95
-----------------------	---	---	-------------------------------	-------------------------



CATEGORY	A	B	C	D
LPV DA	526-1 ³ / ₈	500 (500-1%)		NA
LNAV/VNAV DA	668-1 ⁷ / ₈	642 (700-1%)		NA

NW-1, 13 JUN 2024 to 11 JUL 2024

NW-1, 13 JUN 2024 to 11 JUL 2024