

TIFTON, GEORGIA

AL-5398 (FAA)

23334

|  |                        |                             |   |
|--|------------------------|-----------------------------|---|
| WAAS<br>CH <b>61118</b><br><b>W34A</b> | APP CRS<br><b>332°</b> | Rwy Idg<br>TDZE<br>Apt Elev | <b>6506</b><br><b>354</b><br><b>355</b> |
|--|------------------------|-----------------------------|---|

# RNAV (GPS) RWY 34

HENRY TIFT MYERS (TMA)

**⚠** For uncompensated Baro-VNAV systems, LNAV/VNAV NA below -15°C (5°F) or above 54°C (130°F).  
**⚠** DME/DME RNP-0.3 NA. Circling Rwy 10 NA at night.  
 Rwy 34 helicopter visibility reduction below ¾ SM NA.

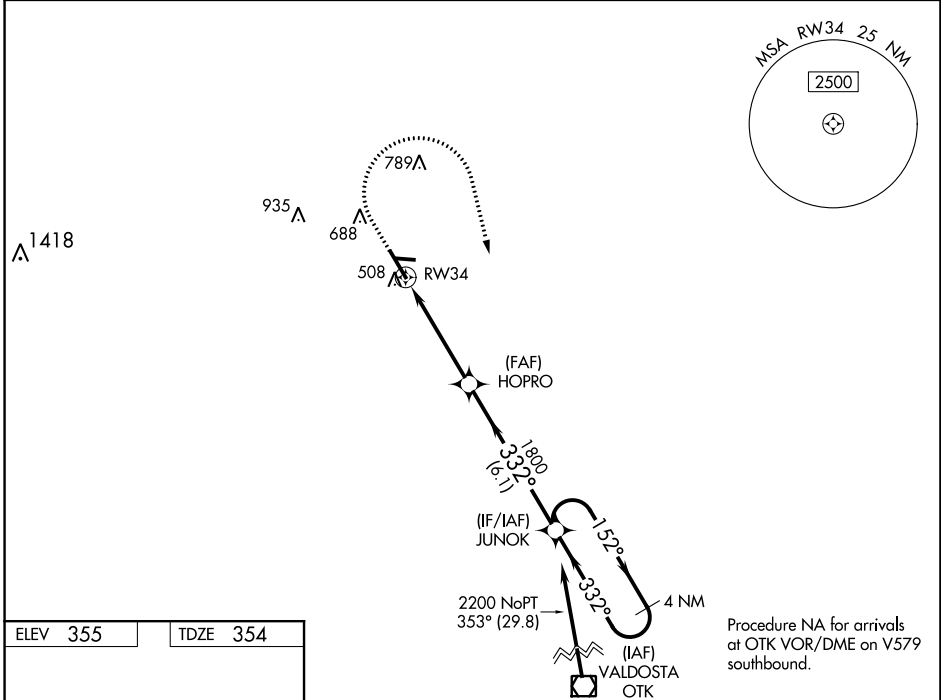
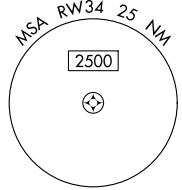


MISSED APPROACH: Climb to 900 then climbing right turn to 2200 direct JUNOK and hold.

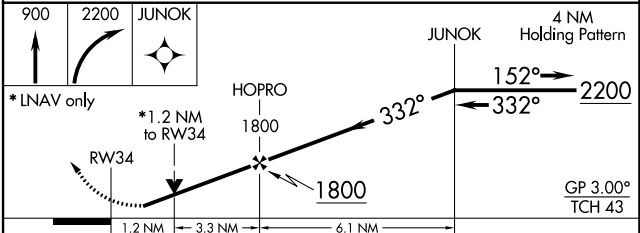
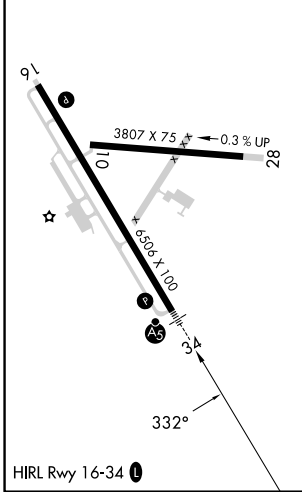
AWOS-3PT  
**118.525**

VALDOSTA APP CON ★  
**126.6 285.6**

UNICOM  
**122.7 (CTAF) 0**



|          |          |
|----------|----------|
| ELEV 355 | TDZE 354 |
|----------|----------|



| CATEGORY          | A                    | B                     | C                     | D                     |
|-------------------|----------------------|-----------------------|-----------------------|-----------------------|
| LPV DA            |                      | 638-¾                 | 284 (300-¾)           |                       |
| LNAV/VNAV DA      |                      | 684-¾                 | 330 (400-¾)           |                       |
| LNAV MDA          |                      | 780-¾                 | 426 (500-¾)           |                       |
| <b>C</b> CIRCLING | 920-1<br>565 (600-1) | 1060-1<br>705 (800-1) | 1060-2<br>705 (800-1) | 1240-3<br>885 (900-3) |

TIFTON, GEORGIA  
Amdt 1A 17AUG17

31°26'N-83°29'W

# RNAV (GPS) RWY 34

HENRY TIFT MYERS (TMA)

SE-4, 13 JUN 2024 to 11 JUL 2024

SE-4, 13 JUN 2024 to 11 JUL 2024