

LOC I-FZU <b>111.1</b>	APP CRS <b>259°</b>	Rwy Idg TDZE Apt Elev <b>7004</b> <b>462</b> <b>463</b>
---------------------------	------------------------	--

# ILS or LOC RWY 26L

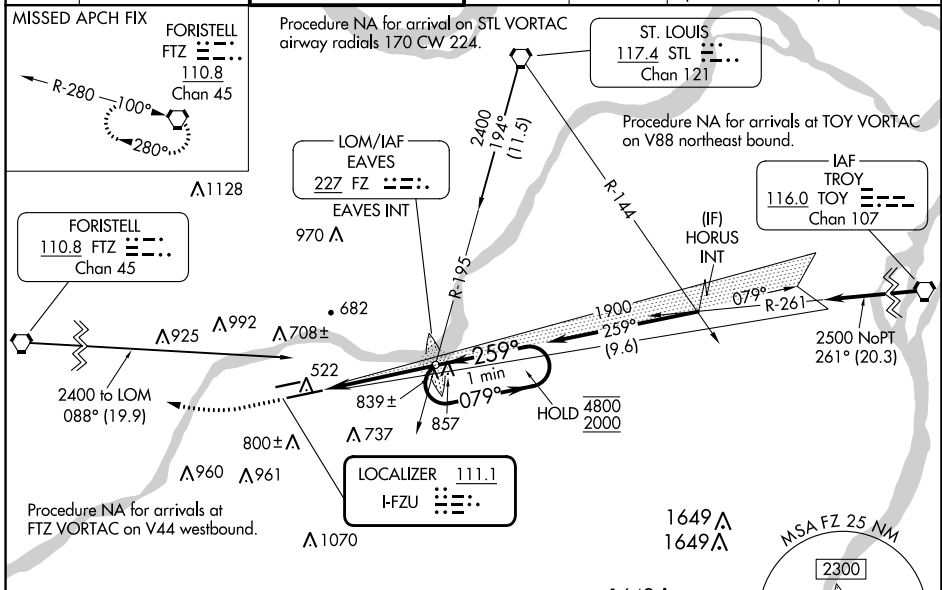
SPIRIT OF ST LOUIS (SUS)

**⚠** When local altimeter setting not received, use St Louis Lambert Intl altimeter setting:  
**⚠** increase S-ILS 26L DA to 705 feet; increase all MDAs 60 feet and S-LOC 26L visibility  
 Cat C and D ½ SM and Circling visibility C ¼ SM. For inop ALS, increase S-LOC 26L Cats C  
 and D visibility to 1½ SM. For inop ALS when using St Louis Lambert Intl altimeter setting,  
 increase S-LOC 26L Cats C and D visibility to 2 SM. \*RVR 1800 authorized with use of FD  
 or AP or HUD to DA (NA when using St Louis Lambert Intl altimeter setting).

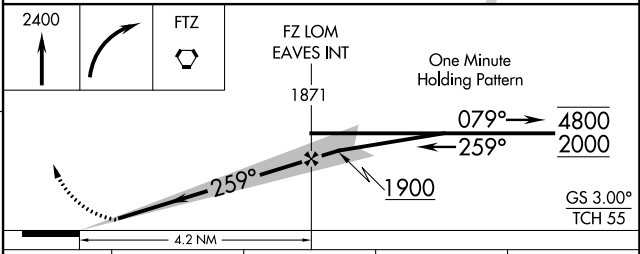
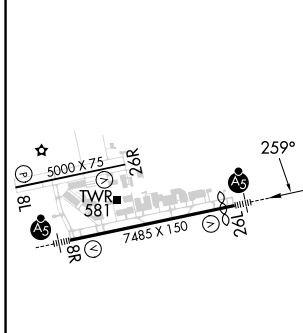


**MISSED APPROACH:**  
 Climb to 2400 then  
 right turn direct FTZ  
 VORTAC and hold.

ATIS <b>134.8</b>	ST. LOUIS APP CON <b>126.5 254.3</b>	SPIRIT TOWER* <b>124.75 (CTAF) 0 257.2</b>	GND CON <b>121.7</b>	CLNC DEL <b>133.1</b>	ST. LOUIS CLNC DEL <b>121.7</b> (when tower closed)	UNICOM <b>122.95</b>
----------------------	---	---	-------------------------	--------------------------	---	-------------------------



ELEV 463	D	TDZE 462
----------	---	----------



CATEGORY	A	B	C	D
S-ILS 26L *	662/24 200 (200-½)			
S-LOC 26L	1140/24	678 (700-½)	1140-1½	678 (700-1½)
CIRCLING	1140-1	677 (700-1)	1180-2	1360-3
			717 (800-2)	897 (900-3)

ST. LOUIS, MISSOURI  
 Orig-F 25JAN24

38°40'N-90°39'W

# SPIRIT OF ST LOUIS (SUS)

# ILS or LOC RWY 26L

NC-3, 13 JUN 2024 to 11 JUL 2024

NC-3, 13 JUN 2024 to 11 JUL 2024