

(PADRZ2.PADRZ) 22027

# PADRZ TWO DEPARTURE (RNAV)

AL-5401 (FAA)

MONTGOMERY-GIBBS EXEC (MYF)  
SAN DIEGO, CALIFORNIA

ATIS  
126.9  
MONTGOMERY TOWER\*  
119.2 269.4 (Rwys 5, 10L/R, 23, 28L)  
125.7 269.4 (Rwy 28R)  
SOCAL DEP CON  
119.6 363.1

**TOP ALTITUDE:  
15000**

## DEPARTURE ROUTE DESCRIPTION

**TAKEOFF RUNWAYS 10L/10R:** Climbing right turn heading 270° to 2000, expect vectors to cross GYWNN at or above 8000, then on track 308° to PADRZ, thence. . . .

**TAKEOFF RUNWAY 23:** Climbing right turn heading 270° to 2000, expect vectors to cross GYWNN at or above 8000, then on track 308° to PADRZ, thence. . . .

**TAKEOFF RUNWAYS 28L/28R:** Climbing left turn heading 270° to 2000, expect vectors to cross GYWNN at or above 8000, then on track 308° to PADRZ, thence. . . .

. . . .on (transition). Maintain 15000. Expect higher altitude 10 minutes after departure.

CHKNN TRANSITION (PADRZ2.CHKNN)

DINTY TRANSITION (PADRZ2.DINTY)

IKAYE TRANSITION (PADRZ2.IKAYE)

MALIT TRANSITION (PADRZ2.MALIT)

ORSZ TRANSITION (PADRZ2.ORSZ)

SHAFTER TRANSITION (PADRZ2.EHF)

NOTE: RNAV 1.

NOTE: RADAR required.

NOTE: Turbojets and turboprops only.

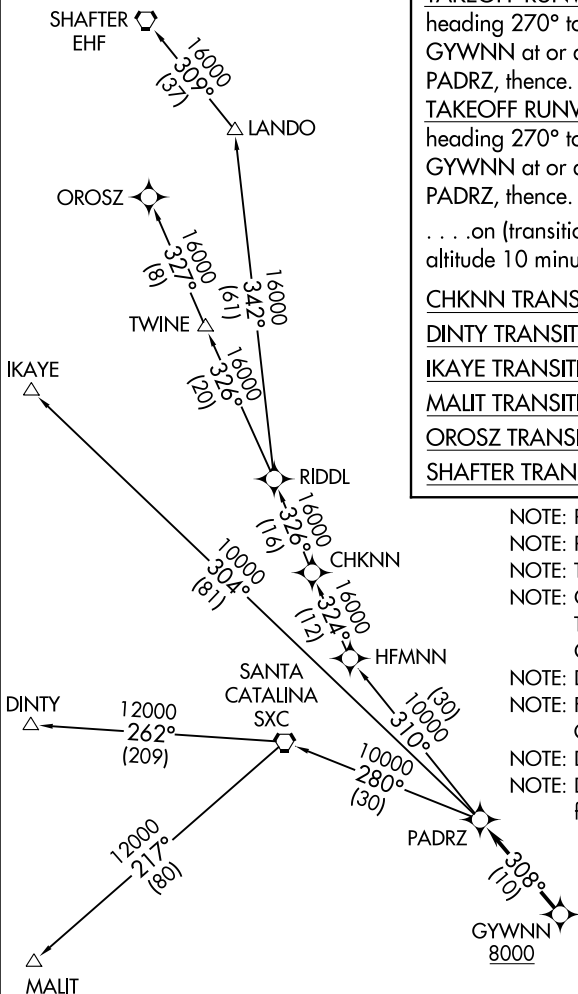
NOTE: CHKNN, SHAFTER, IKAYE, ORSZ TRANSITIONS: DME/DME/IRU or GPS required.

NOTE: DINTY, MALIT TRANSITIONS: GPS only.

NOTE: For non-GPS equipped aircraft, Oceanside (OCN) must be operational.

NOTE: DINTY TRANSITION ATC assigned only.

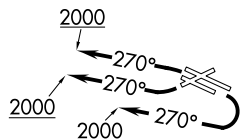
NOTE: DINTY and MALIT TRANSITIONS NA from SEE, SDM and RNM airports.



### TAKEOFF MINIMUMS

Rwy 5: NA-ATC.  
Rwys 10L/10R, 23, 28L/R: Standard.

NOTE: Chart not to scale.



# PADRZ TWO DEPARTURE (RNAV)

(PADRZ2.PADRZ) 07DEC17

SAN DIEGO, CALIFORNIA  
MONTGOMERY-GIBBS EXEC (MYF)

SW-3, 13 JUN 2024 to 11 JUL 2024

SW-3, 13 JUN 2024 to 11 JUL 2024