


WAAS CH <b>58204</b> <b>W17A</b>	APP CRS <b>168°</b>	Rwy Idg <b>6501</b> TDZE <b>17</b> Apt Elev <b>17</b>
--	------------------------	---

# RNAV (GPS) RWY 17

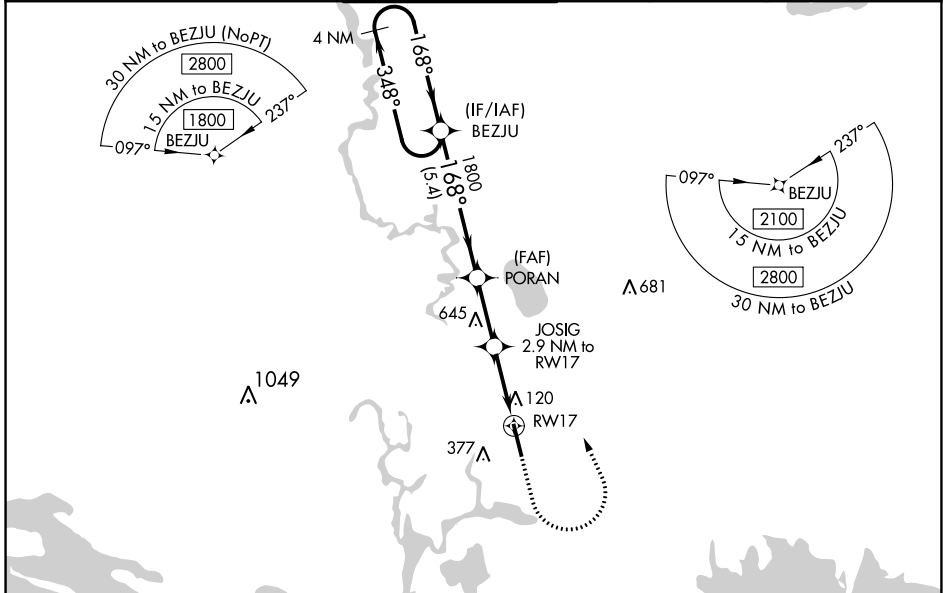
TRENT LOTT INTL (PQL)

RNP APCH - GPS.

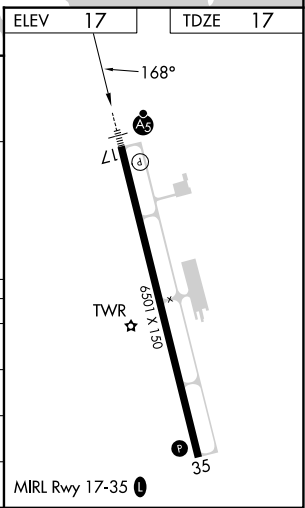
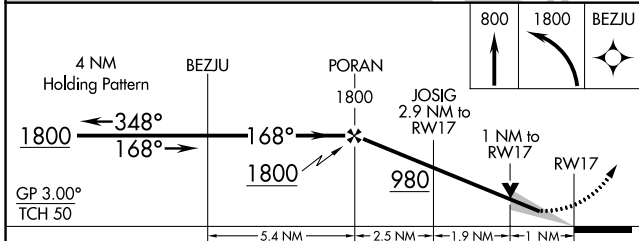
▼ For uncompensated Baro-VNAV systems, LNAV/VNAV NA below -5°C or above 54°C.  
 ▲ When local altimeter setting not received, use Mobile Rgnl altimeter setting; increase LPV DA to 292 feet and LNAV/VNAV DA to 357 feet; increase LNAV/VNAV all visibilities 1/8 SM. Increase all MDA 80 feet and LNAV Cat C/D visibility 1/4 SM and Circling Cat C/D visibility 1/2 SM. Baro-VNAV and VDP NA with Mobile Rgnl altimeter setting. For inop ALS when using Mobile Rgnl altimeter setting increase LPV all Cats visibility to 1/8 SM.

MALSR  MISSED APPROACH: Climb to 800 then climbing left turn to 1800 direct BEZJU and hold.

ATIS <b>135.175</b>	MOBILE APP CON ★ <b>121.0 307.1</b>	TRENT LOTT TOWER ★ <b>118.575 (CTAF) 0</b>	GND CON <b>121.725</b>	CLNC DEL <b>121.725</b>	UNICOM <b>122.8</b>
------------------------	--	---	---------------------------	----------------------------	------------------------



ELEV 17	TDZE 17
---------	---------



CATEGORY	A	B	C	D
LPV DA		217-1/2	200 (200-1/2)	
LNAV/VNAV DA		282-1/2	265 (300-1/2)	
LNAV MDA	380-1/2	363 (400-1/2)	380-5/8	363 (400-5/8)
CIRCLING	480-1 463 (500-1)	680-1 663 (700-1)	680-1 3/4 663 (700-1 3/4)	680-2 663 (700-2)

SC-4, 13 JUN 2024 to 11 JUL 2024

SC-4, 13 JUN 2024 to 11 JUL 2024