

WAAS CH <b>97531</b> <b>W19B</b>	APP CRS <b>194°</b>	Rwy Idg TDZE Apt Elev	<b>3700</b> <b>733</b> <b>733</b>
--	------------------------	-----------------------------	---

# RNAV (GPS) Z RWY 19

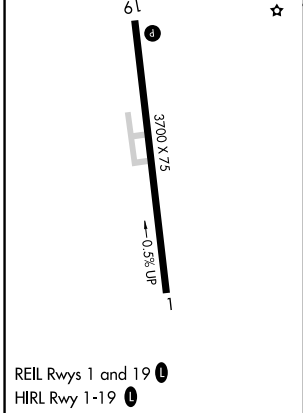
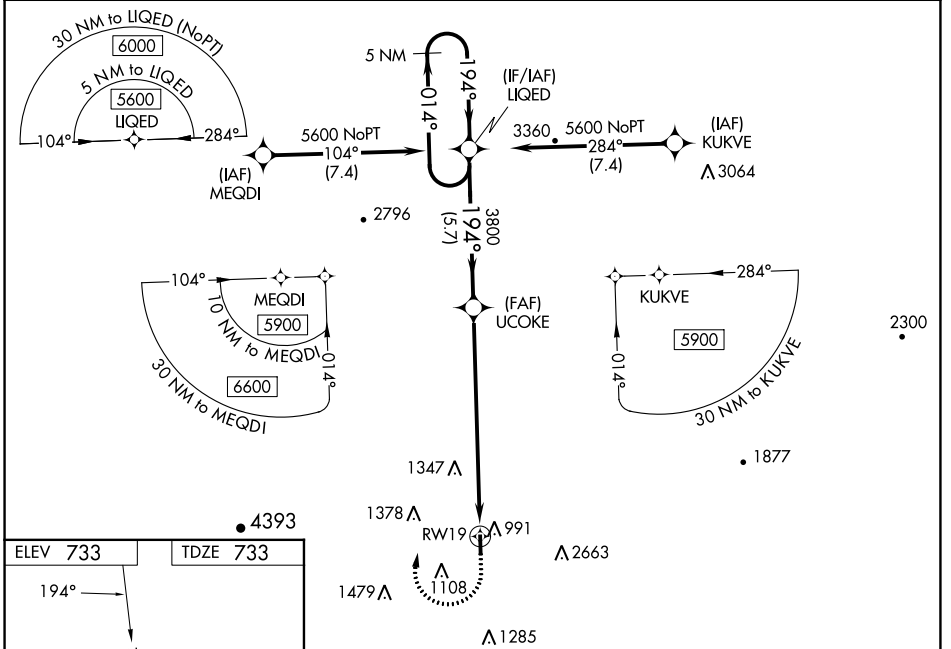
MORRISVILLE-STOWE STATE (MVL)

RNP APCH - GPS.

**⚠** Circling NA for Cat C E of Rwy 1-19. VDP NA when using Burlington altimeter setting. Rwy 19 helicopter visibility reduction below 3/4 SM NA. When local altimeter setting not received, use Burlington altimeter setting: increase LPV DA to 1380 feet and all visibilities 3/4 SM. Increase LNAV/VNAV DA to 1690 feet and all visibilities 1/2 SM. Increase all MDAs 120 feet. Baro-VNAV NA.

**⚠** MISSED APPROACH: (Do not exceed 165K until LIQED) Climb to 2200 then climbing right turn to 5600 direct LIQED and hold, continue climb-in-hold to 5600. Missed approach requires minimum climb of 325 feet per NM to 3000; if unable to meet climb gradient, see RNAV (GPS) Y Rwy 19.

ASOS <b>135.625</b>	BOSTON CENTER <b>135.7 282.2</b>	UNICOM <b>122.8 (CTAF) 0</b>
------------------------	-------------------------------------	---------------------------------



2200	5600	LIQED	5 NM Holding Pattern
*LNAV only	*2.7 NM to RWY 19	UCOKE 3800	LIQED
RWY 19		3800	5600
2.7 NM	5.5 NM	5.7 NM	GP 3.50° TCH 31
CATEGORY	A	B	C
LPV DA	1270-1½	537 (600-1½)	NA
LNAV/VNAV DA	1580-2½	847 (900-2½)	NA
LNAV MDA	1760-1¼ 1027 (1100-1¼)	1760-1½ 1027 (1100-1½)	1760-3 1027 (1100-3)
<b>C</b> CIRCLING	1760-1¼ 1027 (1100-1¼)	1780-1½ 1047 (1100-1½)	1980-3 1247 (1300-3)

NE-1, 13 JUN 2024 to 11 JUL 2024

NE-1, 13 JUN 2024 to 11 JUL 2024