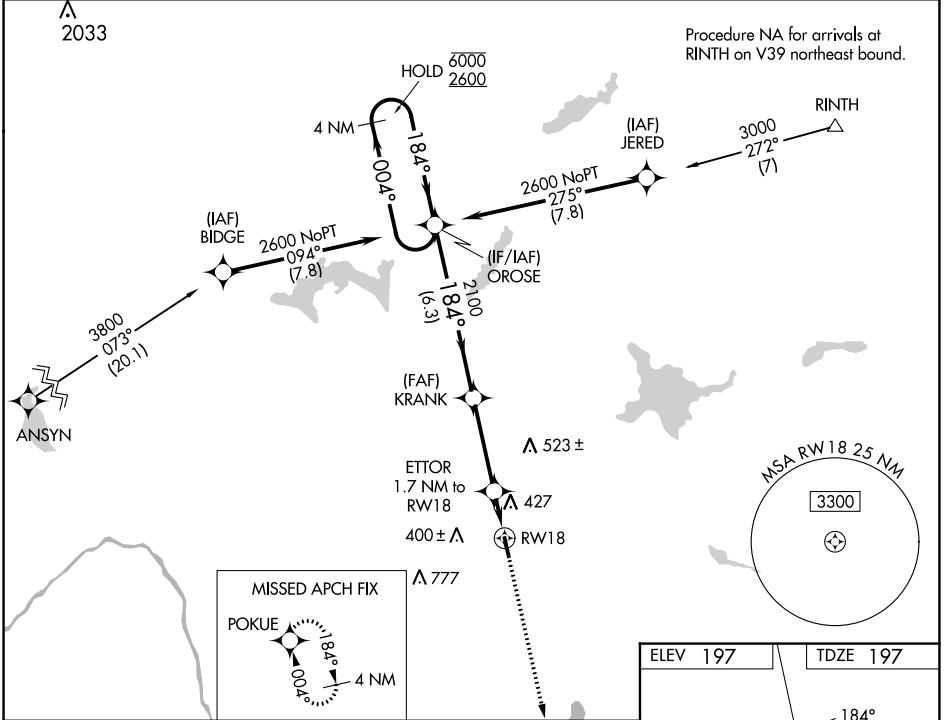


|  |                        |   |             |
|--|------------------------|---|-------------|
| WAAS<br>CH <b>53342</b><br><b>W18A</b> | APP CRS<br><b>184°</b> | Rwy Idg<br>TDZE <b>197</b><br>Apt Elev <b>197</b> | <b>4003</b> |
|--|------------------------|---|-------------|

# RNAV (GPS) RWY 18

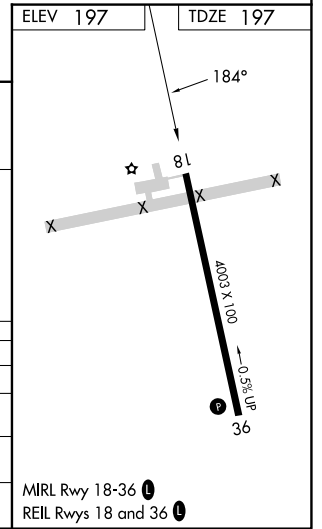
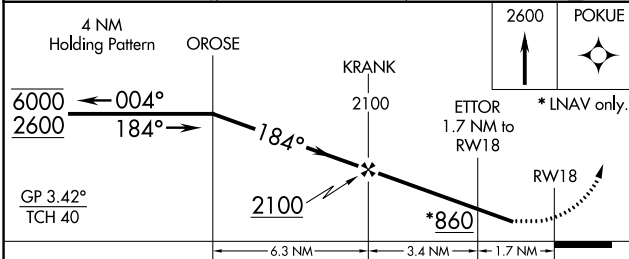
PITTSFIELD MUNI (2B7)

|   |  |   |
|---|--|---|
| RNP APCH.   |  | MISSED APPROACH: Climb to 2600 direct POKUE and hold. |
| <b>V</b> Rwy 18 helicopter visibility reduction below 3/4 SM NA. Baro-VNAV NA.<br><b>Δ</b> NA Use Bangor altimeter setting; when not received procedure NA. |  |   |
| BGR ASOS<br><b>127.75</b>   | BANGOR APP CON<br><b>118.925 239.3</b> | UNICOM<br><b>122.8</b> (CTAF) <b>①</b>                |



NE-1, 13 JUN 2024 to 11 JUL 2024

NE-1, 13 JUN 2024 to 11 JUL 2024



| CATEGORY          | A         | B               | C                            | D  |
|-------------------|-----------|-----------------|------------------------------|----|
| LPV DA            | 610-1 1/8 | 413 (500-1 1/8) |                              | NA |
| LNAV/VNAV DA      | 785-1 3/4 | 588 (600-1 3/4) |                              | NA |
| LNAV MDA          | 740-1     | 543 (600-1)     | 740-1 5/8<br>543 (600-1 5/8) | NA |
| <b>C</b> CIRCLING | 800-1     | 603 (700-1)     | 880-2<br>683 (700-2)         | NA |

MIRL Rwy 18-36 **①**  
REIL Rwy 18 and 36 **①**