

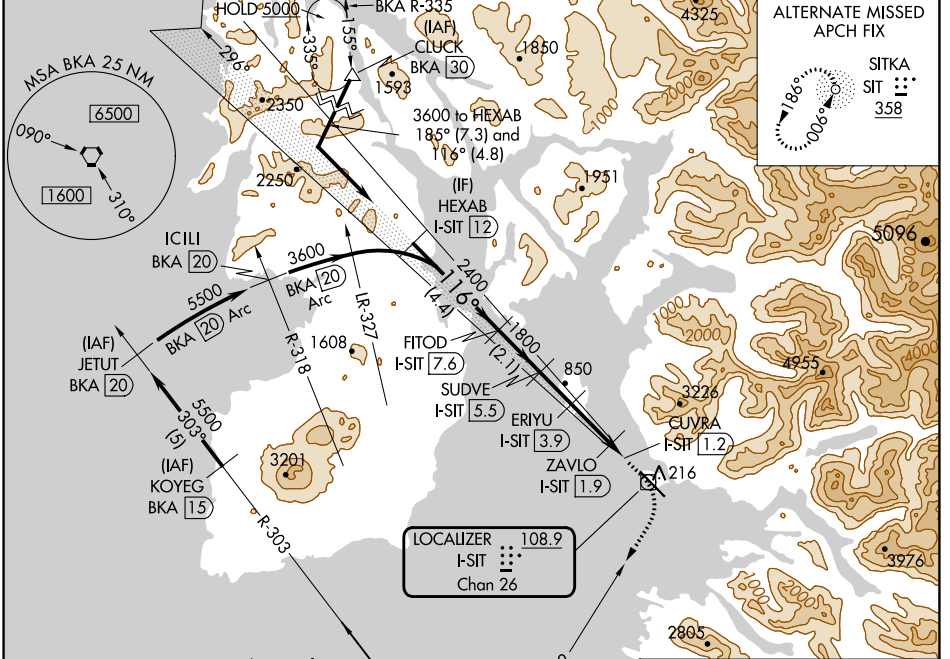
LOC/DME I-SIT	APP CRS	Rwy Idg	6500
108.9	116°	TDZE	24
Chan 26		Apt Elev	27

LDA RWY 11

SITKA ROCKY GUTIERREZ (SIT)(PASI)

DME required.	MISSED APPROACH: Climb to 600 then climbing right turn to 5500 on heading 192° and BKA VORTAC R-012 to BKA VORTAC and hold, continue climb-in-hold to 5500.
<p>⚠ Circling NA northeast of Rwy 11-29.</p> <p>⚠ When local altimeter setting not received, procedure NA.</p>	

AFIS 135.9	ANCHORAGE CENTER 126.1 335.5	SITKA RADIO 123.6 (CTAF) 0 122.2	UNICOM 122.95
----------------------	--	--	-------------------------



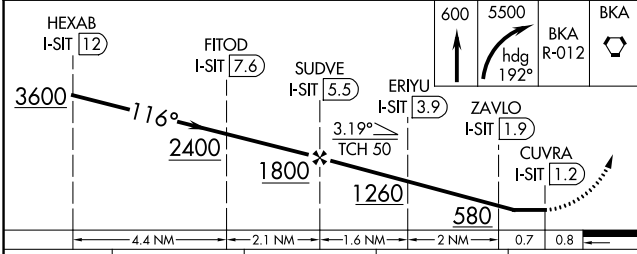
ALTERNATE MISSED APCH FIX

SITKA SIT [358]

186°

000°

MISSED APCH FIX	Procedure NA for arrival on BKA Vortac airway radial 347.	ELEV 27	TDZE 24
-----------------	---	---------	---------



REIL Rwy 11 and 29

HIRL Rwy 11-29

730 x 150

116°

000°

CATEGORY	A	B	C	D
S-11	520-1 496 (500-1)		520-1 3/8 496 (500-1 3/8)	
CIRCLING	520-1 493 (500-1)		540-1 1/2 513 (600-1 1/2)	1500-3 1473 (1500-3)

AK, 16 MAY 2024 to 11 JUL 2024

AK, 16 MAY 2024 to 11 JUL 2024