

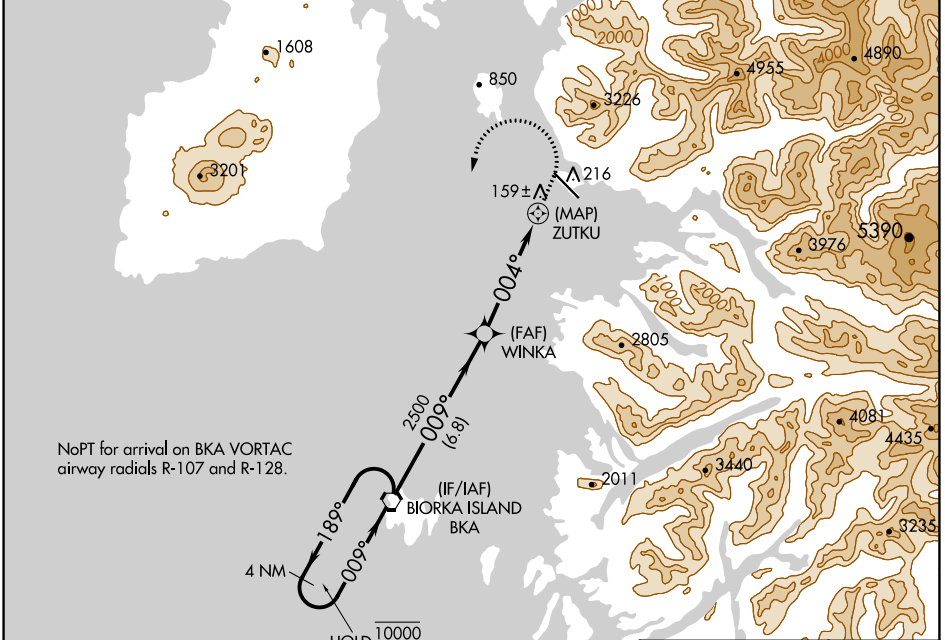
APP CRS 004°	Rwy Idg TDZE Apt Elev	N/A N/A 27
------------------------	-----------------------------	---------------------------------------

RNAV (GPS)-B

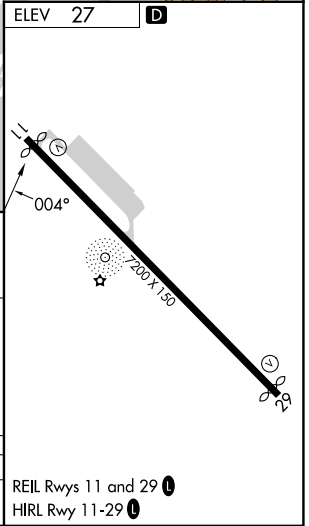
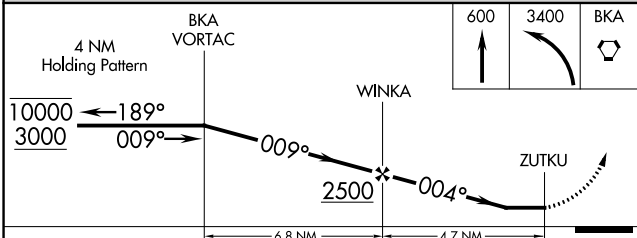
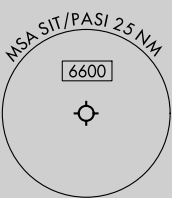
SITKA ROCKY GUTIERREZ (SIT)(PASI)

RNP APCH - GPS.	MISSED APPROACH: (Do not exceed 200K until BKA VORTAC) Climb to 600 then climbing left turn to 3400 direct BKA VORTAC and hold, continue climb-in-hold to 3400.
∇ Circling NA northeast of Rwy 11-29. When local altimeter setting not received, procedure NA.	

AFIS 135.9	ANCHORAGE CENTER 126.1 335.5	SITKA RADIO 123.6 (CTAF) 0 122.2	UNICOM 122.95
----------------------	--	--	-------------------------



NoPT for arrival on BKA VORTAC
airway radials R-107 and R-128.



CATEGORY	A	B	C	D
C CIRCLING	520-1¾	493 (500-1¾)	1220-3 1193 (1200-3)	1620-3 1593 (1600-3)

REIL Rwy 11 and 29 **0**
HIRL Rwy 11-29 **0**

AK, 16 MAY 2024 to 11 JUL 2024

AK, 16 MAY 2024 to 11 JUL 2024