

(STKA9.SSR) 23334

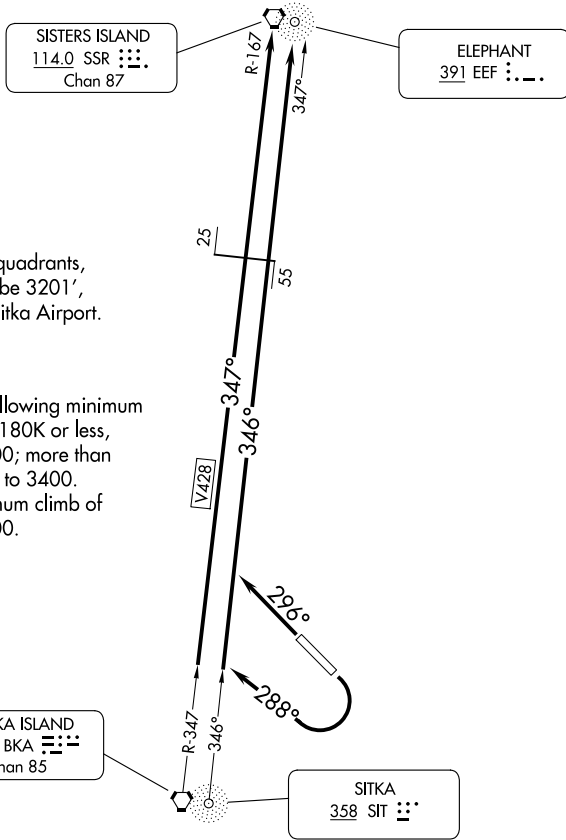
# SITKA NINE DEPARTURE

AL-5414 (FAA)

SITKA ROCKY GUTIERREZ (SIT) (PASI)

SITKA, ALASKA

AFIS  
135.9  
ANCHORAGE CENTER  
126.1 335.5  
SITKA RADIO  
123.6 (CTAF) 122.2  
UNICOM  
122.95



**WARNING:** High terrain all quadrants,  
Mount Edgecumbe 3201',  
13 NM SW of Sitka Airport.

### TAKEOFF MINIMUMS

- Rwy 11: Standard with the following minimum climb requirements: 180K or less, 390' per NM to 4500; more than 180K, 645' per NM to 3400.
- Rwy 29: Standard with minimum climb of 357' per NM to 5400.

NOTE: Chart not to scale.



### DEPARTURE ROUTE DESCRIPTION

**TAKEOFF RUNWAY 11:** Climbing right turn heading 288° to join V428 and SSR R-167 to SSR VORTAC or on SIT 346° bearing and EEF 347° course to EEF NDB.

**TAKEOFF RUNWAY 29:** Climb heading 296° to join V428 to SSR VORTAC or SIT NDB 346° bearing and EEF 347° course to EEF NDB.

# SITKA NINE DEPARTURE

(STKA9.SSR) 13NOV14

SITKA, ALASKA  
SITKA ROCKY GUTIERREZ (SIT) (PASI)

AK, 16 MAY 2024 to 11 JUL 2024

AK, 16 MAY 2024 to 11 JUL 2024