

(IYK2.LHS) 23334

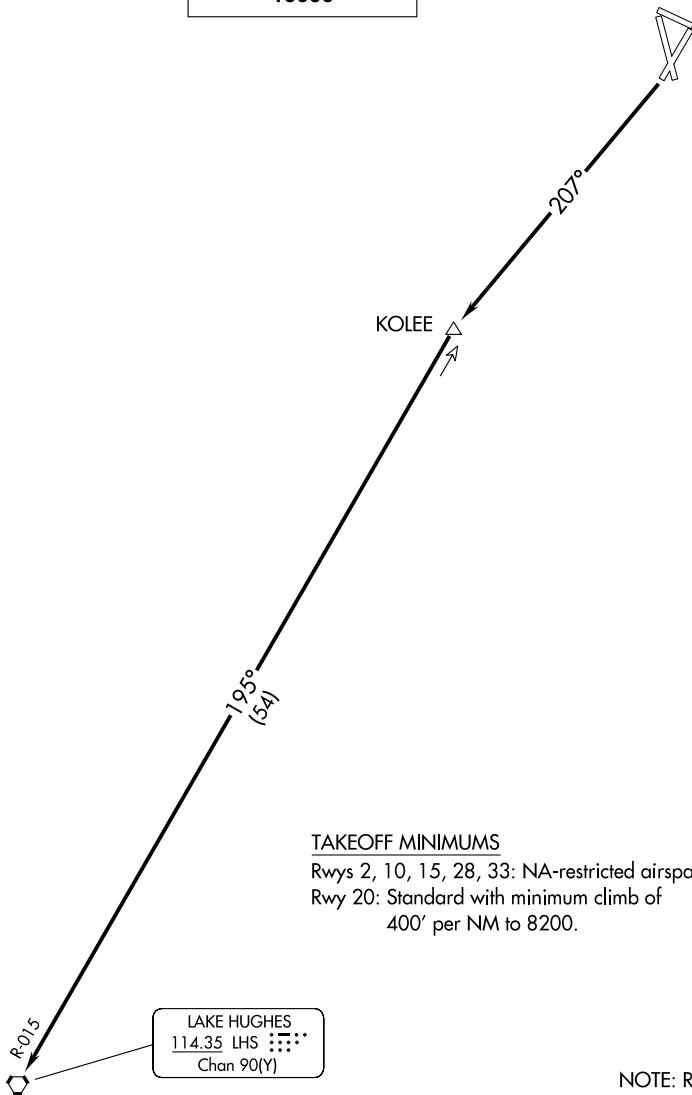
AL-5417 (FAA)

INYOKERN (IYK)
INYOKERN, CALIFORNIA

INYOKERN TWO DEPARTURE

JOSHUA DEP CON
133.65 348.7

TOP ALTITUDE:
10000



TAKEOFF MINIMUMS

Rwys 2, 10, 15, 28, 33: NA-restricted airspace/terrain.

Rwy 20: Standard with minimum climb of

400' per NM to 8200.

NOTE: RADAR required.

NOTE: Chart not to scale.



DEPARTURE ROUTE DESCRIPTION

TAKEOFF RWY 20: Climb to 10000 on heading 207° and LHS VORTAC R-015 to LHS VORTAC, then proceed on course.

INYOKERN TWO DEPARTURE

(IYK2.LHS) 15SEP16

INYOKERN, CALIFORNIA
INYOKERN (IYK)

SW-3, 13 JUN 2024 to 11 JUL 2024

SW-3, 13 JUN 2024 to 11 JUL 2024