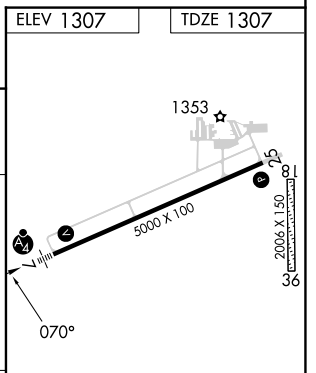
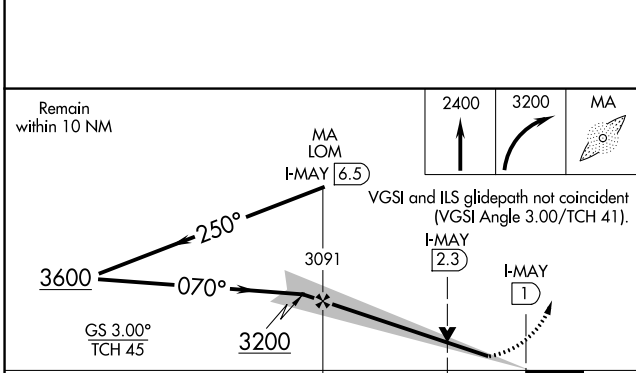
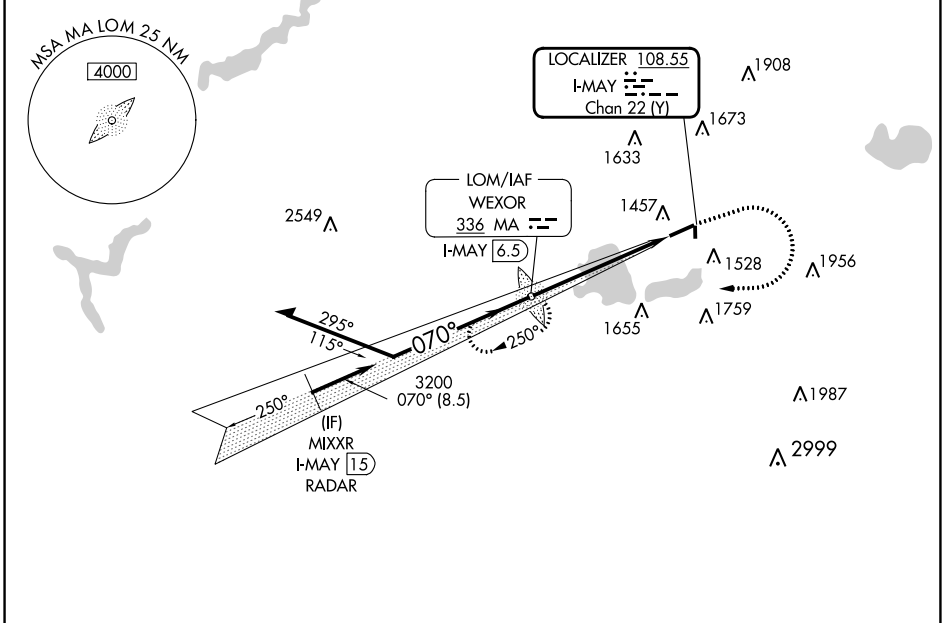


LOC/DME I-MAY 108.55 Chan 22 (Y)	APP CRS 070°	Rwy Idg TDZE Apt Elev	5000 1307 1307
------------------------------------------------------	------------------------	-----------------------------	-------------------------------------------

ILS or LOC RWY 7

WEXFORD COUNTY (CAD)

ADF required. RADAR required for procedure entry.		MALSF	MISSED APPROACH: Climb to 2400 then climbing right turn to 3200 direct WEXOR. LOM/I-MAY 6.5 DME and hold.
<p>▼ Circling NA to Rwys 18 and 36. Inop table does not apply to S-ILS 7 all Cats.</p> <p>▲ NA For inop ALS, increase S-LOC 7 Cat C/D visibility to 1½ SM.</p>			
AWOS-3P 128.325	MINNEAPOLIS CENTER 132.9 338.3	UNICOM 122.8 (CTAF)	



CATEGORY	A	B	C	D
S-ILS 7	1507-¾		200 (200-¾)	
S-LOC 7	1760-¾ 453 (500-¾)		1760-1 453 (500-1)	
C CIRCLING	1840-1 533 (600-1)		2040-2 733 (800-2) 2060-2½ 753 (800-2½)	

HIRL Rwy 7-25					
REIL Rwys 7 and 25					
FAF to MAP 5.5 NM					
Knots	60	90	120	150	180
Min:Sec	5:30	3:40	2:45	2:12	1:50

EC-1, 13 JUN 2024 to 11 JUL 2024

EC-1, 13 JUN 2024 to 11 JUL 2024