

WAAS CH 65941 W05A	APP CRS 045°	Rwy Idg TDZE Apt Elev	5287 927 927
--	------------------------	-----------------------------	---

RNAV (GPS) RWY 5

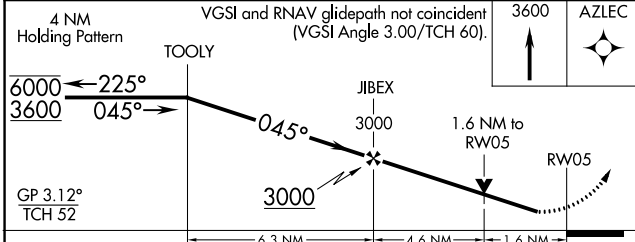
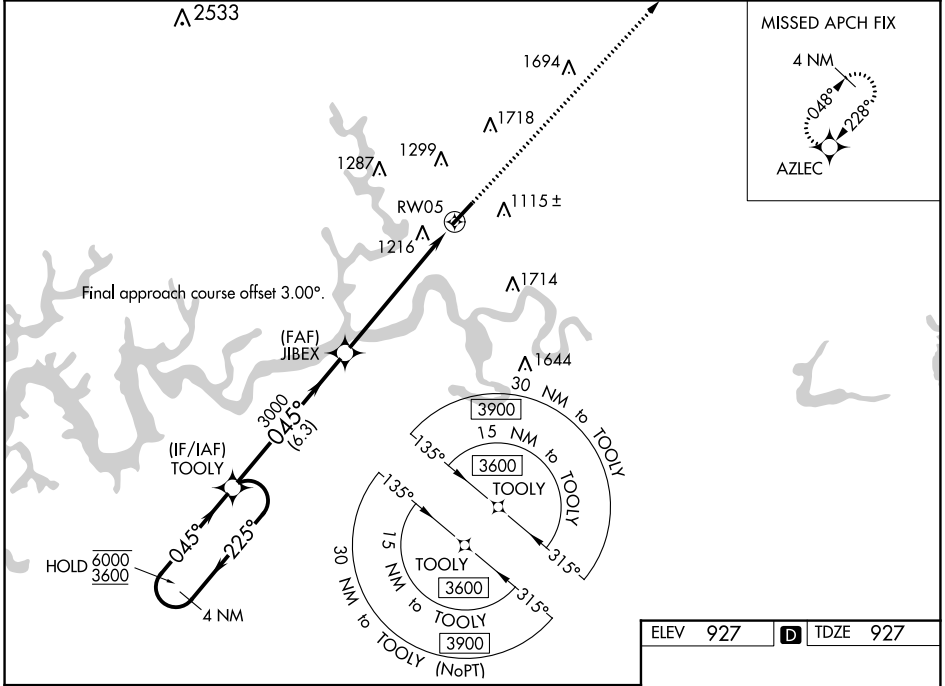
LAKE CUMBERLAND RGNL (SME)

RNP APCH - GPS

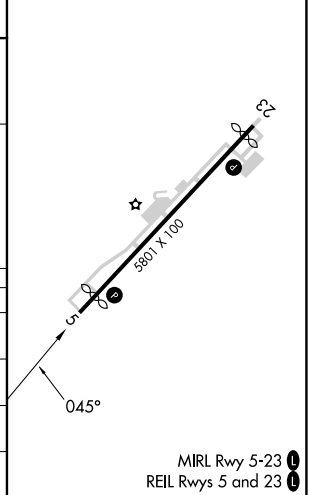
▼ Rwy 5 helicopter visibility reduction below 3/4 SM NA. For uncompensated Baro-VNAV systems, LNAV/VNAV NA below -16°C or above 54°C. Baro-VNAV and VDP NA when using Monticello altimeter setting. When local altimeter setting not received, use Monticello altimeter setting and increase LPV DA to 1221 feet, increase LNAV/VNAV DA to 1591 feet. Increase LPV and LNAV/VNAV visibilities all Cats 1/2 SM. Increase all MDAs 60 feet, increase LNAV Cat C and D visibility 1/2 SM, and Circling Cat B 1/2 SM.

MISSED APPROACH:
Climb to 3600 direct
AZLEC and hold.

AWOS-3 120.05	INDIANAPOLIS CENTER 124.625 371.925	UNICOM 122.8 (CTAF) 0
-------------------------	---	--



ELEV 927	D TDZE 927
----------	-------------------



SE-1, 13 JUN 2024 to 11 JUL 2024

SE-1, 13 JUN 2024 to 11 JUL 2024