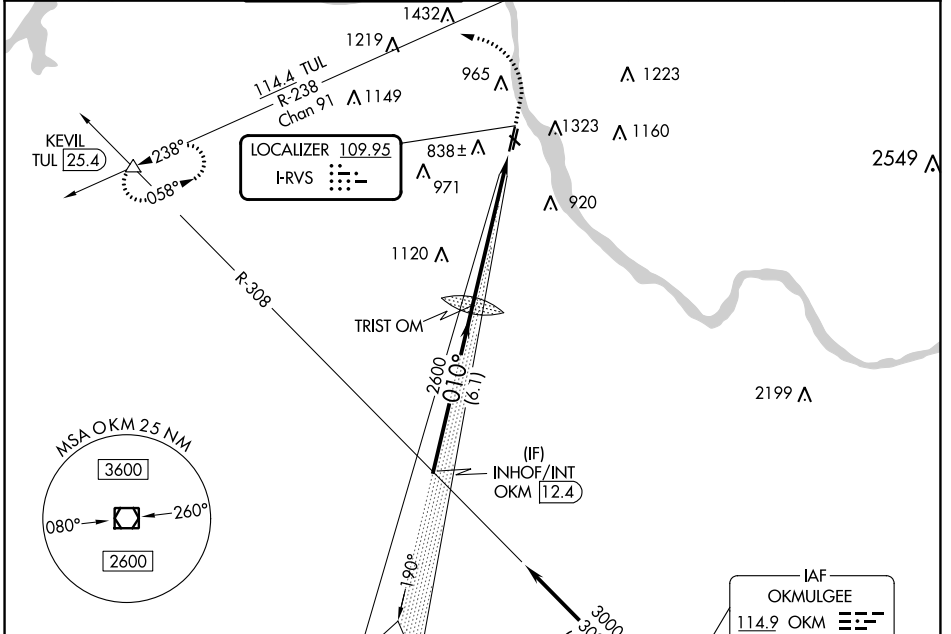


LOC I-RVS	APP CRS	Rwy Idg	<b>5102</b>
<b>109.95</b>	<b>010°</b>	TDZE	<b>626</b>
		Apt Elev	<b>638</b>

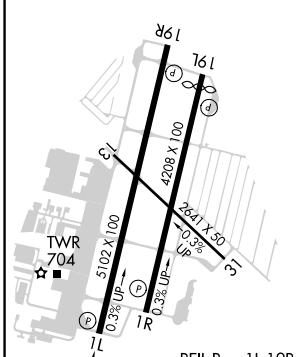
# ILS or LOC RWY 1L

TULSA RIVERSIDE (RVS)

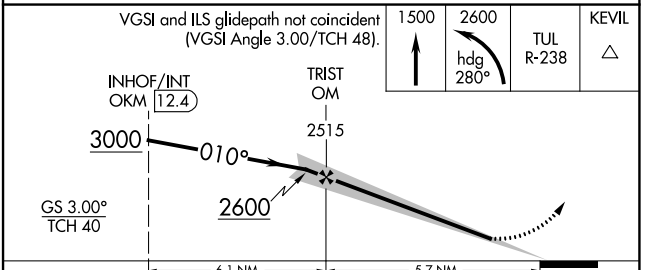
<p>Circling NA northeast of Rwsy 31 and 19L.</p>		<p>MISSED APPROACH: Climb to 1500 then climbing left turn to 2600 on heading 280° and TUL VORTAC R-238 to KEVIL INT/TUL 25.4 DME and hold.</p>			
ATIS	TULSA APP CON	RIVERSIDE TOWER ★	GND CON	CLNC DEL	UNICOM
<b>126.5</b>	<b>134.7</b>	<b>120.3 (CTAF) 0</b>	<b>121.7</b>	<b>124.5</b>	<b>122.95</b>



ELEV 638	<b>D</b>	TDZE 626
----------	----------	----------



Procedure NA for arrival on OKM VOR/DME airway radials 308 CW 359.



FAF to MAP	5.7 NM					
Knots	60	90	120	150	180	
Min:Sec	5:42	3:48	2:51	2:17	1:54	
<b>CIRCLING</b>	A		B		C	D
	1260-1 622 (700-1)		1280-1 642 (700-1)		1280-1¾ 642 (700-1¾)	1360-2 ½ 722 (800-2½)

SC-1, 13 JUN 2024 to 11 JUL 2024

SC-1, 13 JUN 2024 to 11 JUL 2024