

WAAS CH <b>77731</b> <b>W02A</b>	APP CRS <b>018°</b>	Rwy Idg TDZE Apt Elev	<b>5500</b> <b>1018</b> <b>1021</b>
--	------------------------	-----------------------------	---

# RNAV (GPS) RWY 2

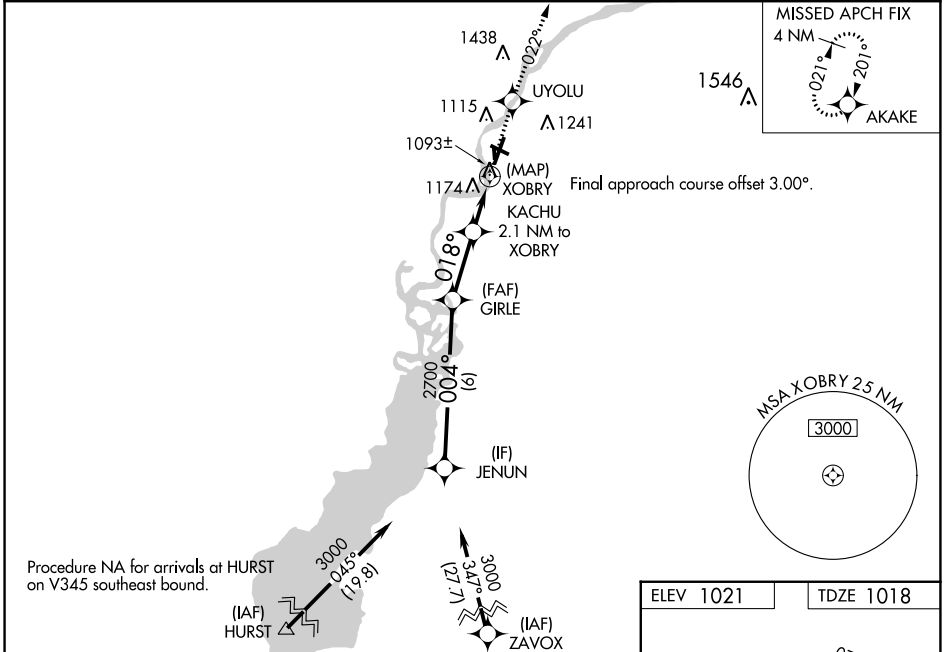
ALEXANDER FLD SOUTH WOOD COUNTY (ISW)

RNP APCH - GPS.

**⚠** Circling NA to Rwys 18 and 36. Circling Rwy 20, 30 NA at night. Baro-VNAV and VDP NA when using Stevens Point altimeter setting. Rwy 2 helicopter visibility reduction below  $\frac{3}{4}$  SM NA. For uncompensated Baro-VNAV systems, LNAV/VNAV NA below -17°C or above 54°C. When local altimeter setting not received, use Stevens Point altimeter setting; increase LPV DA to 1351 feet; increase LNAV/VNAV DA to 1546 feet and all visibilities  $\frac{1}{8}$  SM; increase all MDAs 60 feet, LNAV Cat C and D visibilities  $\frac{1}{8}$  SM and Circling Cat C and D visibilities  $\frac{1}{4}$  SM.

**⚠** MISSED APPROACH: Climb to 3000 direct UYOLU and on track 022° to AKAKE and hold.

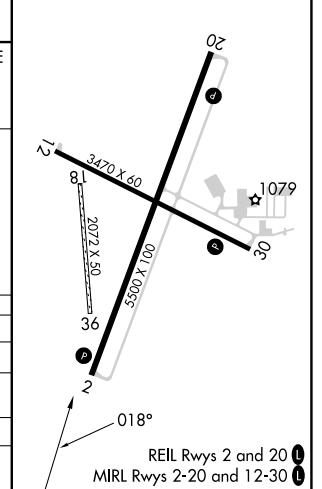
ASOS <b>126.575</b>	MINNEAPOLIS CENTER <b>124.4 317.7</b>	UNICOM <b>122.8 (CTAF) 0</b>
------------------------	--	---------------------------------



ELEV 1021	TDZE 1018
-----------	-----------

VGSI and RNAV glidepath not coincident (VGSI Angle 3.00/TCH 35).

JENUN	GIRLE	UYOLU	tr 022°	AKAKE
3000	2700	3000		
GP 3.00° TCH 50	004°	018°		
6 NM	2.6 NM	1.4	0.7	0.5
CATEGORY	A	B	C	D
LPV DA	1298-1		280 (300-1)	
LNAV/VNAV DA	1493-1 $\frac{3}{8}$		475 (500-1 $\frac{3}{8}$ )	
LNAV MDA	1440-1	422 (500-1)	1440-1 $\frac{1}{4}$	422 (500-1 $\frac{1}{4}$ )
<b>C</b> CIRCLING	1480-1 459 (500-1)	1560-1 539 (600-1)	1620-1 $\frac{1}{2}$ 599 (600-1 $\frac{1}{2}$ )	1800-2 $\frac{1}{2}$ 779 (800-2 $\frac{1}{2}$ )



EC-3, 13 JUN 2024 to 11 JUL 2024

EC-3, 13 JUN 2024 to 11 JUL 2024