

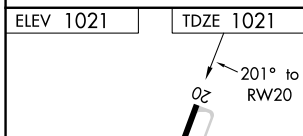
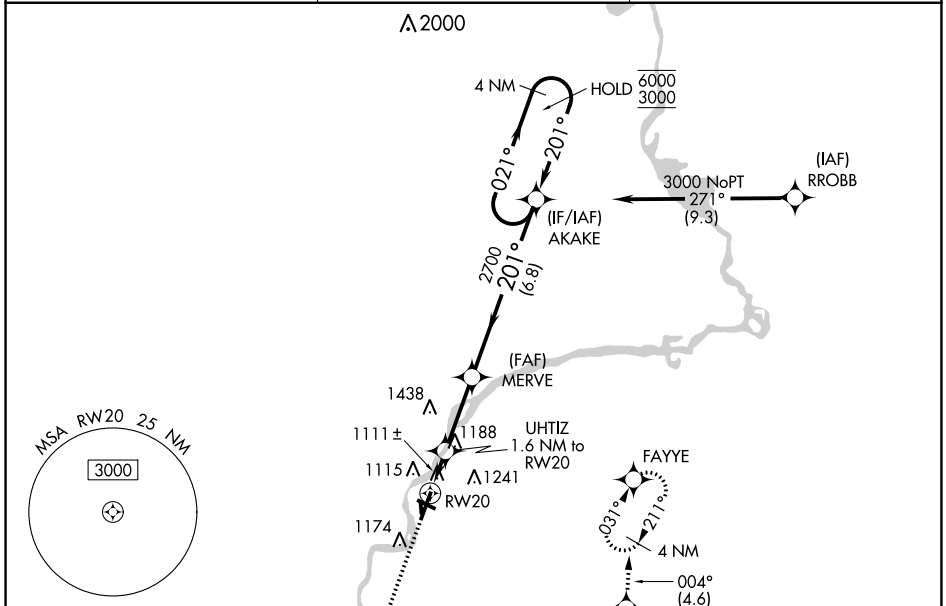
APP CRS	Rwy Idg	5500
201°	TDZE	1021
	Apt Elev	1021

RNAV (GPS) RWY 20

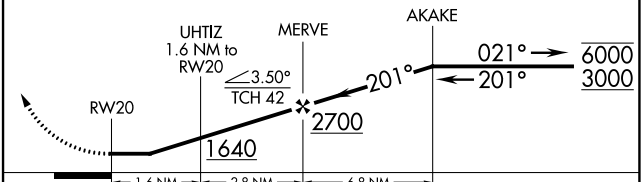
ALEXANDER FLD SOUTH WOOD COUNTY (ISW)

RNP APCH.	MISSED APPROACH: Climb to 3000 direct WEMUG and on track 117° to OCEDE and on track 049° to LHALL and on track 004° to FAYYE and hold.
<p>▼ Circling NA to Rws 18 and 36.</p> <p>▲ Rwy 20 helicopter visibility reduction below 1 SM NA.</p> <p>▲ Straight-in Rwy 20 NA at night, Circling Rwy 20, 30 NA at night.</p>	

ASOS 126.575	MINNEAPOLIS CENTER 124.4 317.7	UNICOM 122.8 (CTAF)
------------------------	--	-------------------------------



3000	WEMUG	tr 117°	OCEDE	tr 049°	LHALL	tr 004°	FAYYE	4 NM Holding Pattern
------	-------	---------	-------	---------	-------	---------	-------	----------------------



CATEGORY	A	B	C	D
LNAV MDA	1380-1		359 (400-1)	
CIRCLING	1480-1 459 (500-1)	1560-1 539 (600-1)	1620-1½ 599 (600-1½)	1800-2½ 779 (800-2½)

ELEV 1021	TDZE 1021
REIL Rws 2 and 20	
MIRL Rws 2-20 and 12-30	

EC-3, 13 JUN 2024 to 11 JUL 2024

EC-3, 13 JUN 2024 to 11 JUL 2024