

APP CRS	Rwy Idg	4899
083°	TDZE	634
	Apt Elev	634

RNAV (GPS) RWY 8

GRIFFITH-MERRILLVILLE (Ø5C)

RNP APCH - GPS.

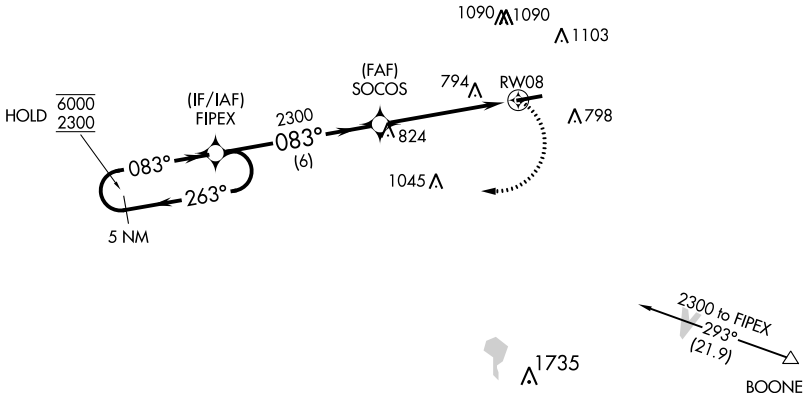
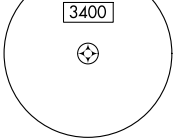
▼ Procedure NA at night. Obtain local altimeter setting on CTAF; when not received, use Chicago Midway Intl altimeter setting and increase all MDAs 60 feet. Rwy 8 helicopter visibility reduction below 1 SM NA.

MISSED APPROACH: Climbing right turn to 2300 direct FIPEX and hold.

CHICAGO APP CON
133.1 285.6

UNICOM
123.0 (CTAF) 0

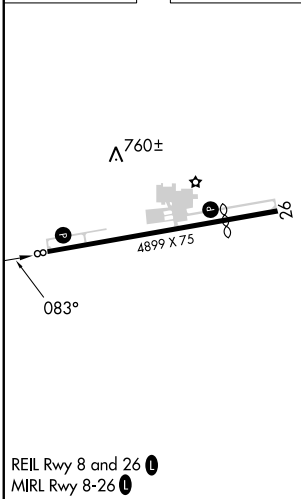
MSA RW08 25 NM



EC-2, 13 JUN 2024 to 11 JUL 2024

EC-2, 13 JUN 2024 to 11 JUL 2024

ELEV 634 TDZE 634



REIL Rwy 8 and 26 0
MIRL Rwy 8-26 0

5 NM Holding Pattern	VGSi and descent angles not coincident (VGSi Angle 3.50/TCH 44).		2300	FIPEX
	6000	2300	2300	
	← 263°	→ 083°	083°	
			3.04° TCH 41	
		6 NM	5 NM	
CATEGORY	A	B	C	D
LNAY MDA	1080-1	446 (500-1)		NA
<input checked="" type="checkbox"/> CIRCLING	1200-1	566 (600-1)		NA