

WAAS CH 61214 W11A	APP CRS 110°	Rwy Idg TDZE Apt Elev	5101 1730 1730
--	------------------------	-----------------------------	---

RNAV (GPS) RWY 11

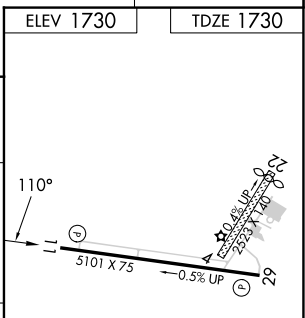
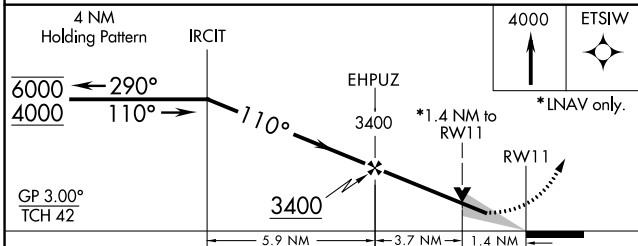
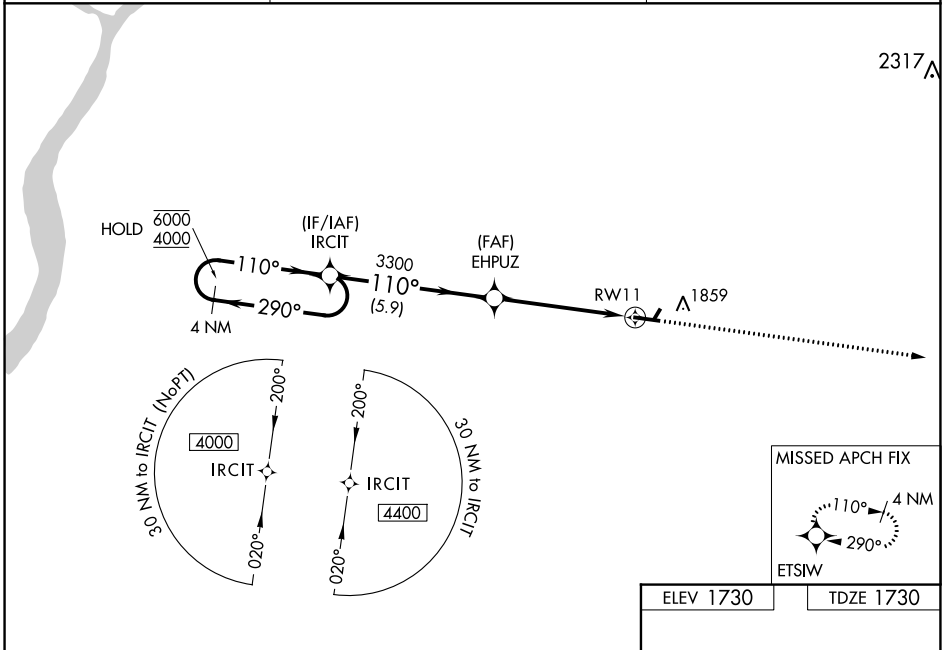
SCHUYLKILL COUNTY/JOE ZERBEY (Z.ER)

RNP APCH.

NA Circling NA to Rws 4 and 22. Baro-VNAV NA when using Selinsgrove altimeter setting. For uncompensated Baro-VNAV Systems, LNAV/VNAV NA below -18°C or above 54°C. When local altimeter setting not received, use Selinsgrove altimeter setting and increase LPV DA to 2191 feet, LNAV/VNAV DA to 2281 feet and all MDAs 280 feet. Increase LPV all Cats visibility $\frac{5}{8}$ SM, LNAV/VNAV all Cats visibility $\frac{3}{4}$ SM, LNAV Cats C/D visibility $\frac{3}{8}$ SM and Circling Cats C/D visibility $\frac{3}{4}$ SM. VDP NA when using Selinsgrove altimeter setting.

MISSED APPROACH: Climb to 4000 direct ETSIW and hold.

AWOS-3 127.575	HARRISBURG APP CON 118.25 269.45	UNICOM 123.075 (CTAF) 0
--------------------------	--	-----------------------------------



CATEGORY	A	B	C	D
LPV DA	1930- $\frac{3}{4}$		200 (200- $\frac{3}{4}$)	
LNAV/DA VNAV	2020- $\frac{7}{8}$		290 (300- $\frac{7}{8}$)	
LNAV MDA	2200-1 470 (500-1)		2200-1 $\frac{3}{8}$ 470 (500-1 $\frac{3}{8}$)	
C CIRCLING	2200-1 470 (500-1)		2220-1 $\frac{1}{2}$ 490 (500-1 $\frac{1}{2}$)	

ELEV 1730	TDZE 1730
REIL Rws 11 and 29 0	
MRL Rwy 11-29 0	

NE-4, 13 JUN 2024 to 11 JUL 2024

NE-4, 13 JUN 2024 to 11 JUL 2024