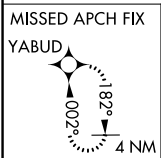
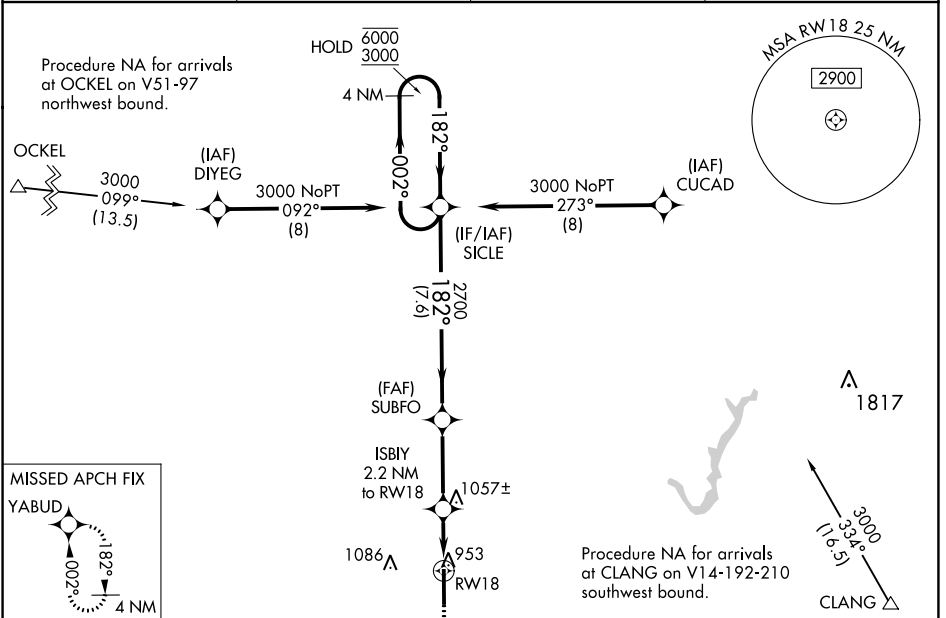


APP CRS 182°	Rwy Idg 7000
	TDZE 922
	Apt Elev 922

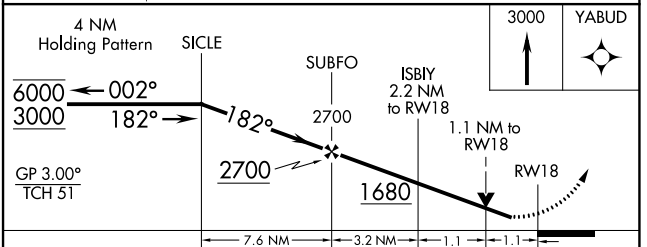
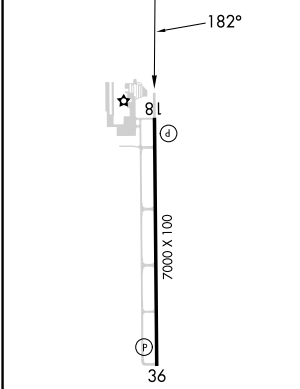
RNAV (GPS) RWY 18

INDIANAPOLIS EXEC (TYQ)

RNP APCH - GPS.		MISSED APPROACH: Climb to 3000 direct YABUD and hold.	
<p>▼ Rwy 18 helicopter visibility reduction below 3/4 SM NA. For uncompensated Baro-VNAV systems, LNAV/VNAV NA below -16°C or above 54°C.</p>			
AWOS-3PT 120.725	INDIANAPOLIS APP CON 124.65 127.15 317.8	CLNC DEL 118.175	UNICOM 123.05 (CTAF)



ELEV 922	TDZE 922
----------	----------



CATEGORY	A	B	C	D
LNAV/VNAV DA	1216-7/8 294 (300-7/8)			
LNAV MDA	1320-1 398 (400-1)		1320-1 1/8 398 (400-1 1/8)	
C CIRCLING	1380-1 458 (500-1)		1440-1 1/2 518 (600-1 1/2) 1480-2 558 (600-2)	

HIRL Rwy 18-36
REIL Rws 18 and 36

EC-2, 13 JUN 2024 to 11 JUL 2024

EC-2, 13 JUN 2024 to 11 JUL 2024