


WAAS CH <b>78319</b> <b>W34A</b>	APP CRS <b>339°</b>	Rwy Idg TDZE Apt Elev	<b>6501</b> <b>1994</b> <b>1999</b>
--	------------------------	-----------------------------	---

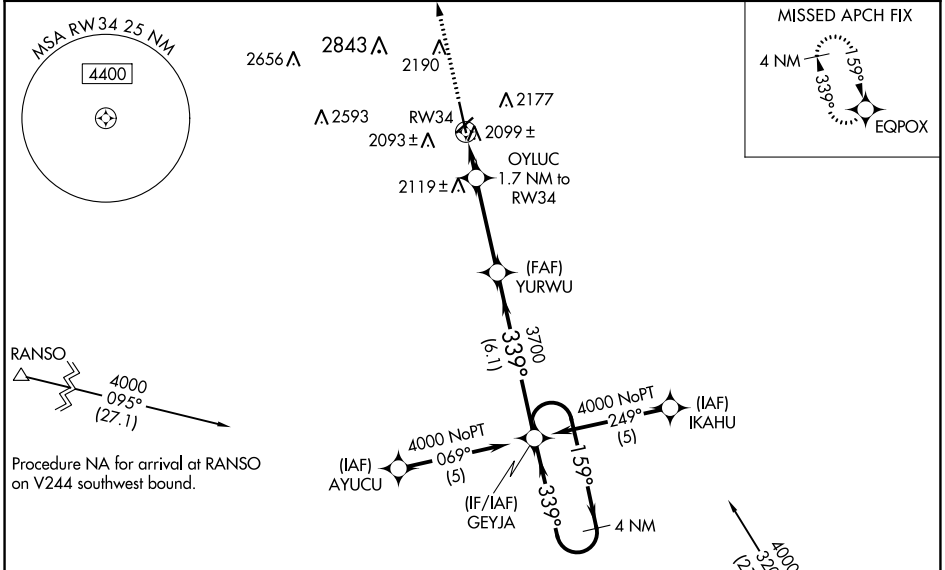
# RNAV (GPS) RWY 34

HAYS RGNL (HYS)

**⚠** For uncompensated Baro-VNAV systems, LNAV/VNAV NA below -18°C (0°F) or above 45°C (113°F). DME/DME RNP-0.3 NA. When local altimeter setting not received, use Russell altimeter setting: increase LPV DA to 2263 feet; increase LNAV/VNAV DA to 2565 feet and visibility all Cats ¼ SM; increase all MDA 80 feet and visibility LNAV Cat C and Circling Cat C and D ¼ SM. Circling NA for Cat D northwest of Rwy 4 and west of Rwy 16. For inoperative MALSR when using Russell altimeter setting, increase LPV all Cats visibility to 1 mile. VDP and Baro-VNAV NA when using Russell altimeter setting.

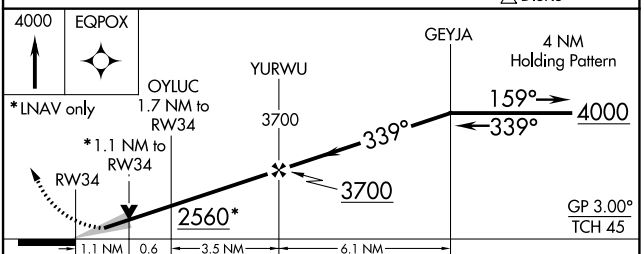
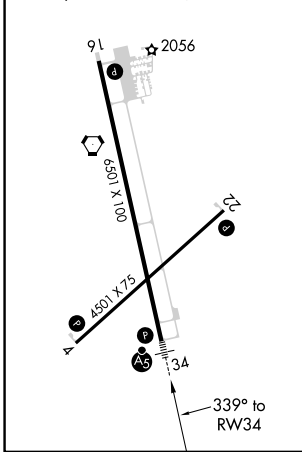
**MALSR**  
  
**MISSED APPROACH:**  
 Climb to 4000 direct EQPOX and hold.

<b>AWOS-3PT</b> <b>125.525</b>	<b>KANSAS CITY CENTER</b> <b>124.4 322.4</b>	<b>UNICOM</b> <b>122.8 (CTAF) 0</b>
-----------------------------------	---	--



ELEV 1999	<b>D</b>	TDZE 1994
-----------	----------	-----------

MIRL Rws 4-22 and 16-34  
 REIL Rws 4, 22 and 16



CATEGORY	A	B	C	D
LPV DA	2194-½		200 (200-½)	
LNAV/VNAV DA	2496-1¼ 502 (500-1¼)			
LNAV MDA	2380-½ 386 (400-½)		2380-1 386 (400-1)	
CIRCLING	2480-1 481 (500-1)		2560-1½ 681 (700-2¼)	

NC-2, 13 JUN 2024 to 11 JUL 2024

NC-2, 13 JUN 2024 to 11 JUL 2024