

VORTAC FNT 116.9 Chan 116	APP CRS 080°	Rwy Idg TDZE Apt Elev 835	N/A N/A 835
---	------------------------	---	--

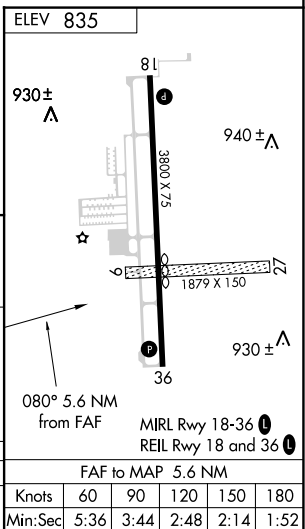
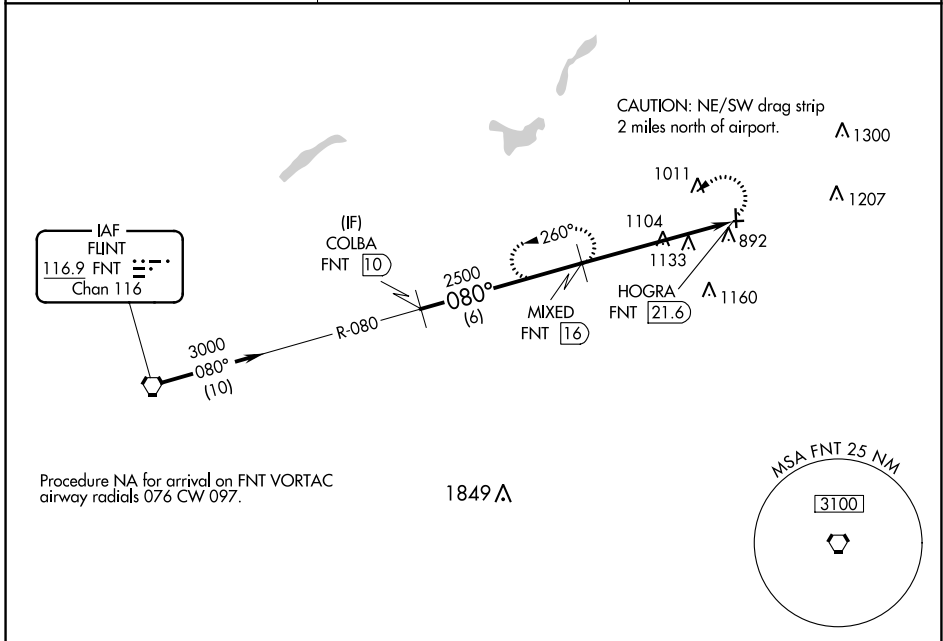
VOR-A
DUPONT/LAPEER (D95)

DME required.

▼ Circling NA to Rwy 9 and 27. Circling Rwy 18 NA at night. Rwy 18 helicopter visibility reduction below 1 SM NA.

MISSED APPROACH: Climbing left turn to 2500 on FNT VORTAC R-080 to MIXED 16 DME and hold.

AWOS-3P 134.050	GREAT LAKES APP CON ★ 118.8 257.9	UNICOM 123.0 (CTAF) 0
---------------------------	---	--



	COLBA FNT 10	MIXED FNT 16	2500	FNT R-080	MIXED FNT 16
CATEGORY	A	B	C	D	
C CIRCLING	1400-1	565 (600-1)	1460-1¾ 625 (700-1¾)	NA	
	FAF to MAP 5.6 NM				
	Knots	60	90	120	150 180
	Min:Sec	5:36	3:44	2:48	2:14 1:52

EC-1, 13 JUN 2024 to 11 JUL 2024

EC-1, 13 JUN 2024 to 11 JUL 2024