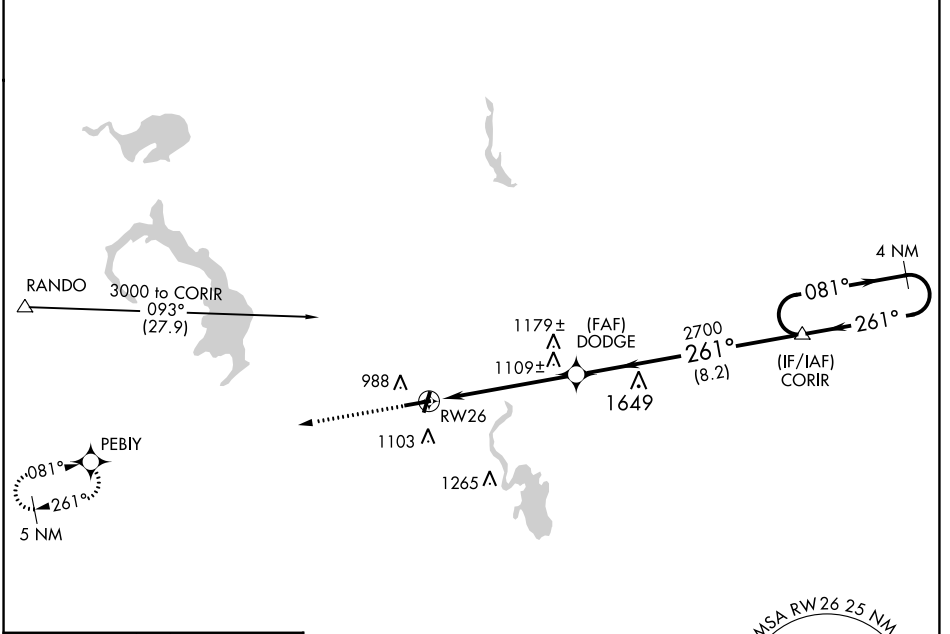


APP CRS	Rwy Idg	5070
261°	TDZE	934
	Apt Elev	934

RNAV (GPS) RWY 26

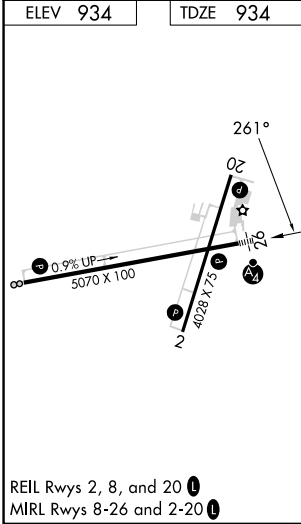
DODGE COUNTY (UNU)

<p>⚠ When local altimeter setting not received, use Dane County Rgnl-Truax Fld altimeter setting and increase all MDAs 100 feet, and increase Circling Cat C visibility ¼ SM. DME/DME RNP-0.3 NA. Visibility reduction by helicopters NA. Inoperative table does not apply.</p>	<p>MALSF </p>	<p>MISSED APPROACH: Climb to 3000 direct PEBIY and hold.</p>
<p>AWOS-3 120.825</p>	<p>MADISON APP CON * 119.15 343.7</p>	<p>UNICOM 122.7 (CTAF) 1</p>



EC-3, 13 JUN 2024 to 11 JUL 2024

EC-3, 13 JUN 2024 to 11 JUL 2024



	MSA RW 26 25 NM		2700	
	3000	PEBIY		
		DODGE	CORIR	4 NM Holding Pattern
	RW26	2700	261°	081° → 3000
	5.4 NM	8.2 NM		
CATEGORY	A	B	C	D
LNAV MDA	1360-1	426 (500-1)	1360-1¼ 426 (500-1¼)	NA
CIRCLING	1440-1	506 (600-1)	1440-1½ 506 (600-1½)	NA