

|  |                        |   |
|--|------------------------|---|
| WAAS<br>CH <b>78333</b><br><b>W18A</b> | APP CRS<br><b>181°</b> | Rwy Idg <b>4201</b><br>TDZE <b>242</b><br>Apt Elev <b>243</b> |
|--|------------------------|---|

# RNAV (GPS) RWY 18

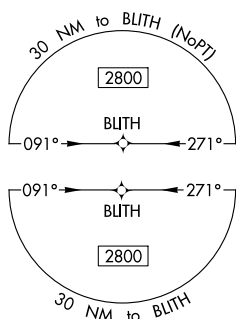
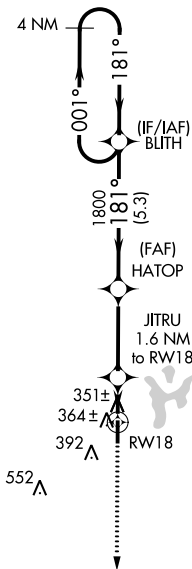
MANILA MUNI (MXA)

RNP APCH-GPS.

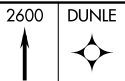
⚠ NA Straight-in Rwy 18 NA at night. Circling Rwy 18 NA at night. Rwy 18 helicopter visibility reduction below 1 SM NA. Use Blytheville Muni altimeter setting; when not received, use Jonesboro altimeter setting and increase all MDA 20 feet.

MISSED APPROACH:  
Climb to 2600 direct  
DUNLE and hold.

|                            |  |                               |
|----------------------------|--|-------------------------------|
| HKA ASOS<br><b>135.025</b> | MEMPHIS CENTER<br><b>120.075 289.4</b> | UNICOM<br><b>122.8 (CTAF)</b> |
|----------------------------|--|-------------------------------|

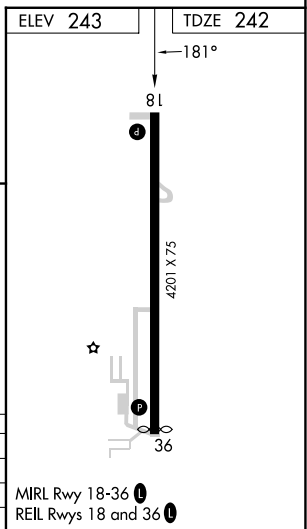
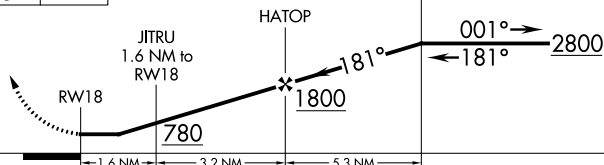


△ 745



Visual Segment - Obstacles.

BLITH Holding Pattern 4 NM



| CATEGORY          | A     | B           | C | D  |
|-------------------|-------|-------------|---|----|
| LP MDA            | 640-1 | 398 (400-1) |   | NA |
| LNAV MDA          | 660-1 | 418 (500-1) |   | NA |
| <b>C</b> CIRCLING | 740-1 | 497 (500-1) |   | NA |

MIRL Rwy 18-36  
REIL Rwy 18 and 36